



DISTRICT PROFILE KILLA ABDULLAH



IMPLEMENTATION PARTNERS FOR BRDCEP GRANT COMPONENT



EU-TECHNICAL ASSISTANCE PARTNER



Written by

Asmat Kakar, Monitoring and Evaluation Officer, BRDCEP, RSPN

©2017 Rural Support Programmes Network (RSPN), Balochistan Rural Support Programme (BRSP), and National Rural Support Programme (NRSP). All rights Reserved.

www.rspn.org; www.brsp.org.pk; www.nrsp.org.pk



“This publication has been produced with the assistance of the European Union. The contents of this publication are the sole responsibility of Rural Support Programmes Network (RSPN), Balochistan Rural Support Programme (BRSP), and National Rural Support Programme (NRSP) and can in no way be taken to reflect the views of the European Union.”

More information about the European Union is available on:

Web: <http://eeas.europa.eu/delegations/pakistan/>

Facebook: [European-Union-in-Pakistan/269745043207452](https://www.facebook.com/European-Union-in-Pakistan/269745043207452)

<i>Acronyms and Abbreviations</i>	1
<i>1. District Profile Brief</i>	2
<i>2. Demography and Population</i>	4
<i>3. District Administration</i>	5
<i>4. Agriculture and Horticulture</i>	8
<i>5. Gender and Women Empowerment</i>	9
<i>6. Health and WASH</i>	10
<i>7. Education</i>	12
<i>Community Institutions of BRSP</i>	15
<i>Bibliography</i>	16

List of Figures and Tables

Figure 1: District Map	Error! Bookmark not defined.
Figure 2: Local Government Administration Organogram (Administrative Setup)	6
Figure 3: Stage wise Enrolment 2016-17	9
Figure 4: Person Collecting Water in Killa Abdullah (%)	10
Figure 5: Rural Children Immunized aged 12-23 months (%)	10
Figure 6: Health Facilities 2014-15.....	11
Figure 8: Drinking Water Sources	12
Figure 9: Number of Schools 2016-17	13
Figure 10: Total School by Level 2016-17	13
Figure 11: Functional and Non Functional Schools 2016-17	13
Figure 12: Sanctioned and Appointed Staff in Schools 2016-17	13
Figure 13: Student Teacher Ratio 2016-17.....	13
Figure 14: Rural Gross Enrolment Ratio at Primary Level (age 5-9)	13
Figure 15: Available Facilities in Schools 2016-17	14
Table 1: Demography and Population Patterns	4
Table 2: Poverty Status in Killa Abdullah	5
Table 3: Tehsils and Union Councils.....	6
Table 4: Federal and Provincial Government Departments in Killa Abdullah	7
Table 5: NGOs working in Killa Abdullah.....	7
Table 6: Land Utilization 2014-15 (area in hectares)	8
Table 7: Area Irrigated by different Sources of Irrigation 2014-15 (area in hectares)	8
Table 8: Member of Household Own Land in Rural Areas	8
Table 9: Number of Tube-wells 2014-15.....	9
Table 10: Number of Government & Private Tube-wells 2014-15	9
Table 11: Health Facilities 2014-15	10
Table 12: Number of Health Practitioners 2014-15	11

Table 13: Water and Sanitation Indicators (%)	11
Table 14: Distribution of Rural Household by Source of Drinking Water (%)	12
Table 15: Distribution of Rural Households by Type of Toilet (%)	12
Table 16: Rural Education Indicators (%)	14

ACRONYMS AND ABBREVIATIONS

AIDS	Acquired Immune Deficiency Syndrome
ANC	Antenatal Care
ARI	Acute Respiratory Infection
BHU	Basic Health Unit
BLGO	Balochistan Local Government Ordinance
BRDCEP	Balochistan Rural Development and Community Empowerment Programme
BRSP	Balochistan Rural Support Programme
DC	Deputy Commissioner
DEWS	Disease Early Warning System
DHIS	District Health Information Software
EPI	Expanded Programme on Immunization
EU	European Union
GoB	Government of Balochistan
HH	Household
HMIS	Health Management Information Systems
Km	Kilometer
LG	Local Government
LSO	Local Support Organisation
MICS	Multiple Indicators Cluster Survey
MNCH	Maternal, Newborn and Child Health
NADRA	National Database and Registration Authority
NGO	Non-Governmental Organisation
PBS	Pakistan Bureau of Statistics
PDMA	Provincial Disaster Management Authority
P&D	Planning and Development
PSDP	Public Sector Development Programme
PSLM	Pakistan Social and Living Standards Measurement
RHC	Rural Health Clinics
RMC	Regional Metrological Centre
RSP	Rural Support Programme
RSPN	Rural Support Programmes Network
SBA	Skilled Birth Attendant
TB	Tuberculosis
TBA	Traditional Birth Attendance
LHV	Lady Health Visitor
LHW	Lady Health Worker
LHW-MIS	Lady Health Worker - Management Information Systems

1. DISTRICT PROFILE BRIEF

Major Factors

District Status:	14 June, 1993
Geographical Area:	5,263 Square km
Administrative Units:	4 Tehsils and 25 Union Councils (LG Balochistan)
Major Ethnic Groups:	Pashtun, Kakar, Achakzai
Languages:	Pashto, Urdu
Climate:	Dry winter, Scanty rainfall, dry summer

Demography

District Population:	757,578 (2017)
Rural Population:	608,236 (80.29%)
Population Growth Rate:	3.97 (average annual 1998-2017)
Household Size:	7.79 persons

Law & Order:

3 Police Stations, 7 Levies Thanas (GoB, 2014-15)

Productive Sector

Agriculture Ecological Zone:	Very cold
Agriculture Land Area (hectares):	Cultivated area Net sown: 9,360 Area not available for cultivation: 0 Culturable waste: 0 (GoB, 2014-15)
Major Crops:	<i>Rabi</i> Crops: Wheat, Barley, Cumin, Vegetables, Fodder <i>Kharif</i> Crops: Fruits, Melons, Tobacco, Potato, Fodder, Onion, Vegetables
Major Fruits:	Apple, Apricot, Peach, Plum Grapes, Pomegranate

Livestock Population:

	Livestock 630,566 Domestic poultry 366,695 (GoB, 2014-15)
Veterinary Institutions:	4 Veterinary Hospitals, 28 Veterinary Dispensaries
Telecommunications:	8 Telephone exchanges, 3647 Landlines
Post offices:	7 Post Offices (GoB, 2014-15)

Social Sector

Drinking Water Sources:	99% Improved, 1% Un-improved (MICS, 2010)
Sanitation Facilities:	96% Improved, 4% Un-improved (MICS, 2010)

Health Facilities: 1 Hospital (Public Sector)
 6 Rural Health Centres RHC
 9 Dispensaries (GoB, 2014-15)

Pre-Natal consultation: 21% (% of cases) (PSLM, 2014-15)

Major Diseases: ARI, Diarrhea, Malaria, Gastrointestinal diseases,
 Respiratory diseases

Special Health Programmes: Expanded Program on Immunization, TB Control Program,
 Malaria Control Program, Hepatitis Prevention and Control
 Program, MNCH Program, National Program for Family
 Planning & Primary Health Care, AIDS Control Program

Reporting and Surveillance Systems: HMIS and DHIS, Disease Early Warning System,
 LHW-MIS

Number of Schools: Girls 16%, Boys 83%, Co-education 3%

Primary level Rural Gross Enrolment Ratio (age 5-9): Female 14, Male 50

GEOGRAPHIC MAPS

Killa Abdullah district is located, 1,205-2,675 meter above sea level, in the north of Balochistan province. It is bordered with Afghanistan to the north, Pishin to the east Quetta to the east south.



HISTORY, TRIBES AND LANGUAGES

Killa Abdullah is a historical town located in northern Balochistan. It was given district status in 1993. Kakar, Achakzai, Syed and Tareen are the main tribes living in the district. Mostly inhabitants are Pashtuns and speak Pashto.

2. DEMOGRAPHY AND POPULATION

Total population of district Killa Abdullah is 757,578 (Census PBS, 2017) as compared to 360,724 in 1998; 52.48% is male population and 47.52% is female population in 2017. Male-female sex ratio is 110.45 and population growth rate is 3.97% per year. Urban population of the district is 149,342 (19.71%) and rural population is 608,236 (80.29%). District household size is 7.79, urban household size is 7.74 and rural household size is 7.80.

Table 1: Demography and Population Patterns

INDICATOR	NUMBER
Total Population	757,578
-Male	397,591 (52.48%)
-Female	359,982 (47.52%)
-Urban	149,342 (19.71%)
-Rural	608,236 (80.29%)
Transgender	5
-Urban	0
-Rural	5
Sex Ratio	110.45
-Urban	111.42
-Rural	110.21
Households	97,210
-Urban	19,291
-Rural	77,919
Household size	7.79
-Urban	7.74
-Rural	7.80

Source: Census PBS, 2017

District Killa Abdullah's Poverty Status

Killa Abdulla is the poorest district among eight BRDCE Programme districts in multidimensional poverty (MP) index ranking (also poorest in Balochistan province), MPI is based on 15 indicators of PSLM survey on education, health and standard of living (Planning Commission, UNDP and OPHI, 2016). According to PPAF and SDPI (2016) Killa Abdullah is ranked second poorest district in BRDCEP area, based on 27 indicators of PSLM survey pertaining to education, health, living conditions, and assets ownership.

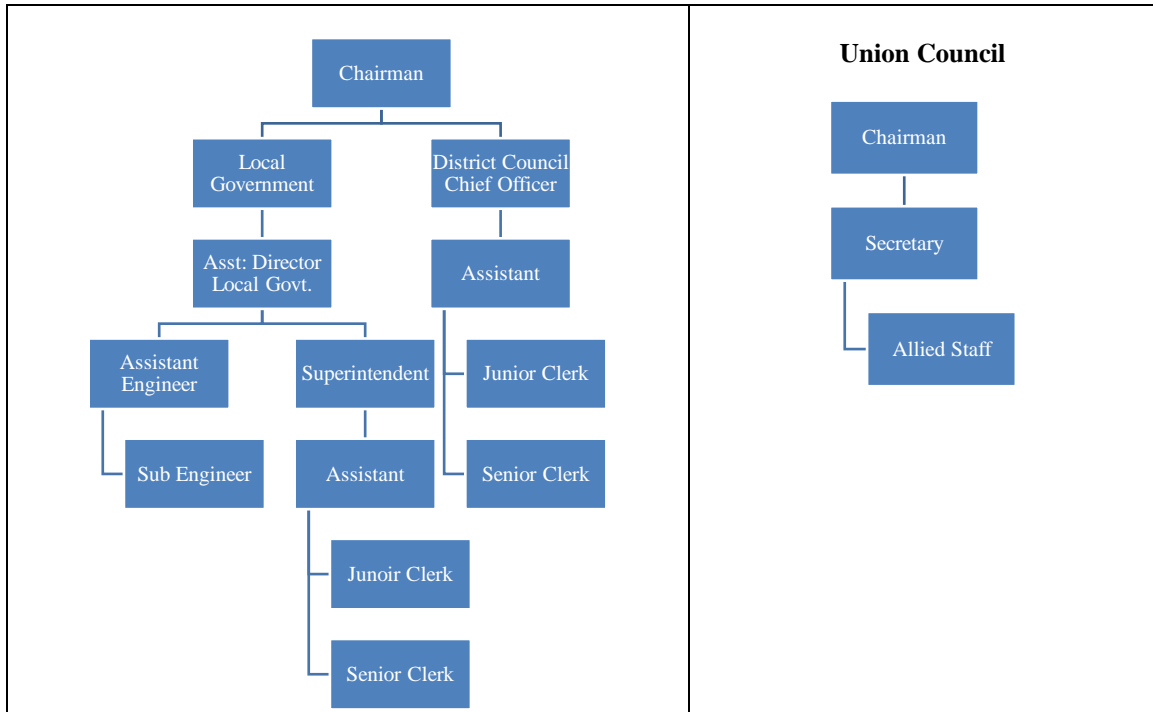
Table 2: Poverty Status in Killa Abdullah

Planning Commission, UNDP, OPHI, 2016	Multidimensional Poverty (MP) Index	Incidence of Poverty (%)	Intensity of Poverty (%)	Category of Incidence of Poverty
2014-15	0.641	96.9	66.2	70% and above
PPAF & SDPI, 2016	MP Population Share		MP Headcount Ratio	
2012-2013	0.34		85.1	

3. DISTRICT ADMINISTRATION

Balochistan Local Government Ordinance (BLGO, 1980) was replaced by BLGO, 2001 with a concept of district's Government. The district Killa Abdullah was administrated by the single line of administration covering rural and urban parts. The earlier system worked for two tenures, hence changed into BLGA 2010. Current Local Government Act 2010 is similar to BLGO (1980) and works in rural urban settings separately. Local Government Institutions of the district include Municipal Committees which is headed by the Chairman and relevant ward members, this depends on the number of population living in the area. District Council Chief Officer assists Chairman and members in Government set up; in the district Government, women, workers, and minorities are represented. Administrative set up of Local Government Administration is further explained in organogram given below:

Figure 1: Local Government Administration Organogram (Administrative Setup)



Source: P&D, GoB, 2011

TEHSILS AND UNION COUNCILS

There are four Tehsils and 33 Union Councils (UCs) in Killa Abdullah district. Below given table and map show tehsil wise listing and geographical location of UCs.

Table 3: Tehsils and Union Councils

TEHSIL	UNION COUNCIL
Chaman	Boghra, Chaman, Daman Ashezai, Daman Miralzai, Eid Gah, Girdi Pinki, Mehmood Abad, Purana Chaman, Roghani-I, Roghani-II, Sirki Talri
Dobandi	Aghbarg, Jilga
Gulistan	Abdul Rehmanzai, Darozai, Gulistan-I, Gulistan-II, Segi
Killa Abdullah	Habibzai, Jani Deh, Killa Abdullah-I, Killa Abdullah-II, Maizai, Masezai, Pir Alizai



Source: UNOCHA, 2017

Table 4: Federal and Provincial Government Departments in Killa Abdullah

Education Department	Agriculture Department
Health Department	Livestock Department
Local Government and Rural Development	Social Welfare Department
Forest Department	Irrigation Department
Public Health Engineering Department	Population Welfare Department
National Database and Registration Authority	

Table 5: NGOs working in Killa Abdullah

Balochistan Rural Support Programme
UNDP – RAHAs
MSF
ASD
WESS
PIDS
Koshan
CTC
World Health Organisation
Agha Khan Foundation
PPHI

4. AGRICULTURE AND HORTICULTURE

The district falls in very cold zone, with total cultivated area is 15,122 hectares, the potential major crops are wheat, barley, fodder, onion, vegetables, melons, tobacco, cumin, and potato. The potential fruits in the districts are apple, apricot, peach, plum grapes, and pomegranate. Tube wells and Karezes (springs) are commonly used main sources of irrigation for agriculture and others. Private sector dominates with key responsibility to own and maintain tube wells and Karezes. Details of agriculture land, land ownership, and irrigation given in tables below:

Table-6 shows land utilization statistics. Table-7 shows area irrigated by different sources of irrigation. Table-8 shows number of household own land in rural areas. Table-9 shows number of government & private tube-wells in the district.

Table 8: Land Utilization 2014-15 (area in hectares)

Reported area	Cultivated area			Cropped area		Un-cultivated area			
	Total	Current fallow	Net sown	Total	Area sown more than once	Total	Cultivable waste	Forest area	Area not available for cultivation
15735	15122	5762	9360	9439	79	613	0	613	0

Source: GoB, 2014-15

Table 9: Area Irrigated by different Sources of Irrigation 2014-15 (area in hectares)

Irrigated area	Canal		Tube-well	Well	Karezes, springs & others
	Govt.	Private			
9222	0	0	8300	43	879

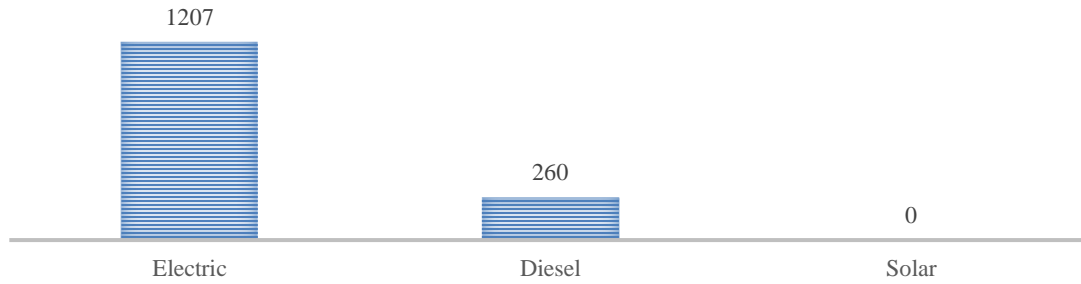
Source: GoB, 2014-15

Table 10: Member of Household Own Land in Rural Areas

Ownership	Percentage
Owner	56
Landless	44
Total	100

Source: MICS, 2010

Table 11: Number of Tube-wells 2014-15



Source: GoB, 2014-15

Table 12: Number of Government & Private Tube-wells 2014-15

Government				Private				Total			
Electric	Diesel	Solar	Total	Electric	Diesel	Solar	Total	Electric	Diesel	Solar	Total
87	0	0	87	1120	260	0	1380	1207	260	0	1467

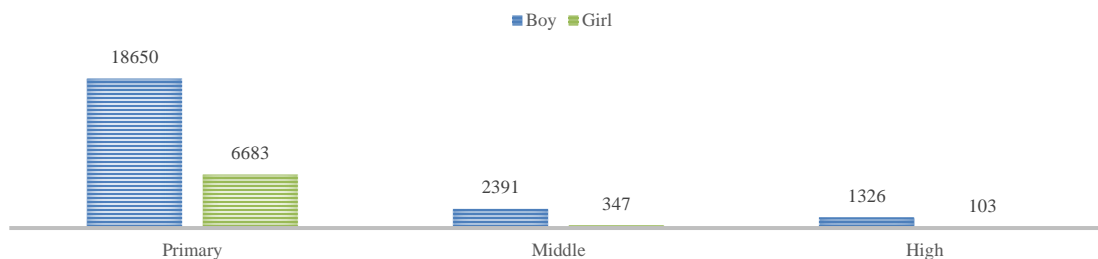
Source: GoB, 2014-15

5. GENDER AND WOMEN EMPOWERMENT

According to Education Management Information System - EMIS (2016-17) of Government of Balochistan, there is huge difference between girls' and boys' enrolment rate at primary, middle and high levels. Female are 47.5% of district population as per Census – 2017. Tribal and social norms are patriarchal, especially in rural settings, which make women more economically dependent on men. Ultimately, they contribute least in labour force and other spheres of life.

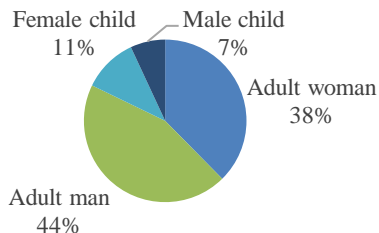
Figure-3 shows stage wise enrolment in district Killa Abdullah. Figure-4 shows gender wise persons collecting water

Figure 2: Stage wise Enrolment 2016-17



Source: EMIS, GoB, 2017

Figure 3: Person Collecting Water in Killa Abdullah (%)



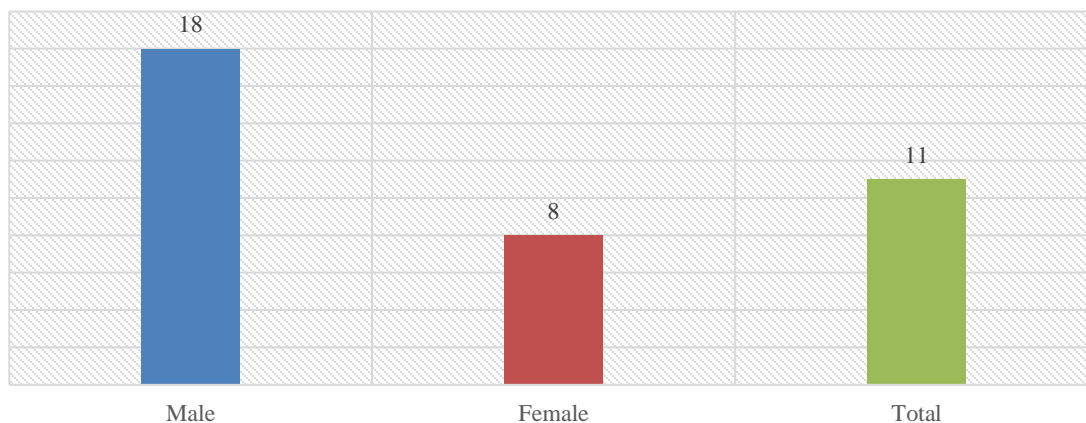
Source: MICS, 2010

6. HEALTH AND WASH

Figure-6 shows the percentage of children immunized aged 12-23 months in rural areas of Killa Abdullah district. Table-10 shows status of health facilities. Figure-7 shows the number of BHUs, MCHs and TB clinics. Table-11 shows the number of health practitioners. Table-12 shows water and sanitation indicators. Figure-8 shows drinking water sources. Table-13 shows distribution of rural household by source of drinking water. Table-14 shows distribution of rural households by type of toilet.

Detailed statistics related to immunization, health facilities, practitioners, and water, sanitation & hygiene (WASH) are given in tables below:

Figure 4: Rural Children Immunized aged 12-23 months (%)



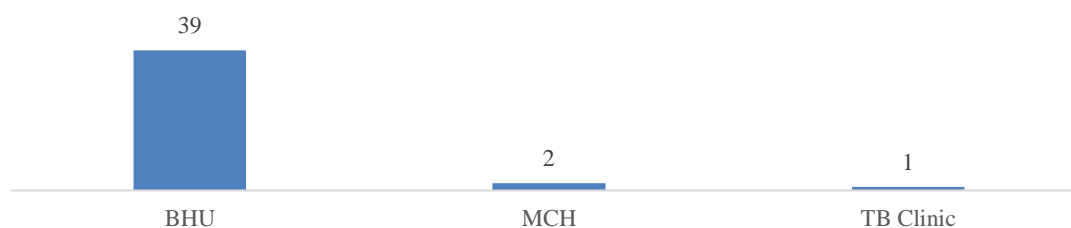
Source: PSLM, Pakistan Bureau of Statistics, 2014-15

Table 13: Health Facilities 2014-15

	Public	Private
Hospital	1	2
Dispensaries	9	0
RHC	6	..

Source: GoB, 2014-15

Figure 5: Health Facilities 2014-15



Source: GoB, 2014-15

Table 14: Number of Health Practitioners 2014-15

PRACTITIONERS	NUMBER
Doctors (total)	68
-Male	55
-Female	13
Nurses (total)	13
-Male	3
-Female	10
Pharmacist	17
Drug Inspector	4
Health Education Officer	0
LHV	25
Dias/Mid Wives	51
Malaria cases (2013-14)	1016

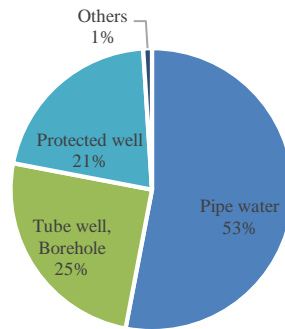
Source: GoB, 2014-15

Table 15: Water and Sanitation Indicators (%)

Indicator	2004	2010
Use of improved water sources	40	99
Access to safe means of excreta disposal	23	96

Source: MICS, 2004 & 2010

Figure 6: Drinking Water Sources



Source: MICS, 2010

Table 16: Distribution of Rural Household by Source of Drinking Water (%)

Tap Water	13
Hand Pump	0
Motor Pump	23
Dug Well	12
Others	51
Total	100

Source: PSLM, Pakistan Bureau of Statistics, 2014-15

Table 17: Distribution of Rural Households by Type of Toilet (%)

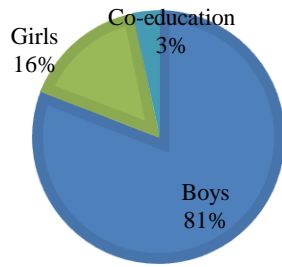
Flush	6
Non flush	70
No Toilet	24

Source: PSLM, Pakistan Bureau of Statistics, 2014-15

7. EDUCATION

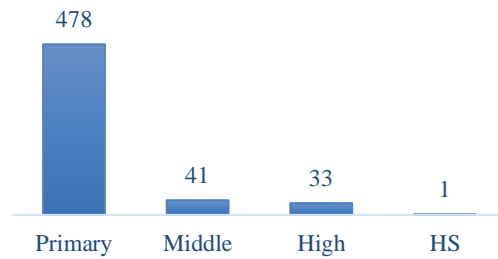
According to recent data from GoB and EMIS sources below given figure-9 shows gender wise number of schools in district Killa Abdullah. Figure-10 shows the total number of schools by level. Figure-11 shows the number of functional and nonfunctional schools. Figure-12 shows the number of sanctioned and appointed staff in Schools. Figure-13 shows student teacher ratio. Figure-14 shows available facilities in schools. Figure-15 shows rural gross enrolment ratio at primary level (age 5-9). Figure-16 shows rural education indicators.

Figure 7: Number of Schools 2016-17



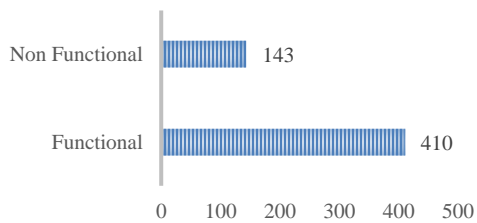
Source: EMIS, GoB, 2017

Figure 8: Total School by Level 2016-17



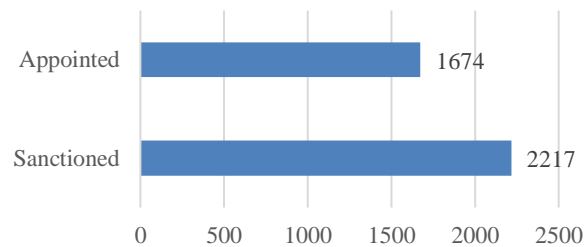
Source: EMIS, GoB, 2017

Figure 9: Functional and Non Functional Schools 2016-17



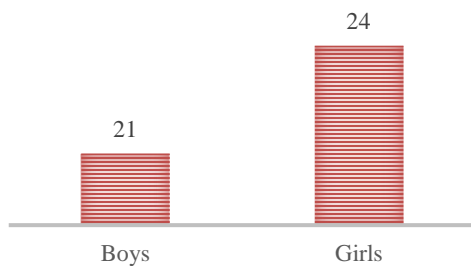
Source: EMIS, GoB, 2017

Figure 10: Sanctioned and Appointed Staff in Schools 2016-17



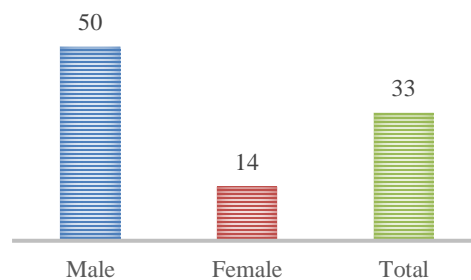
Source: EMIS, GoB, 2017

Figure 11: Student Teacher Ratio 2016-17



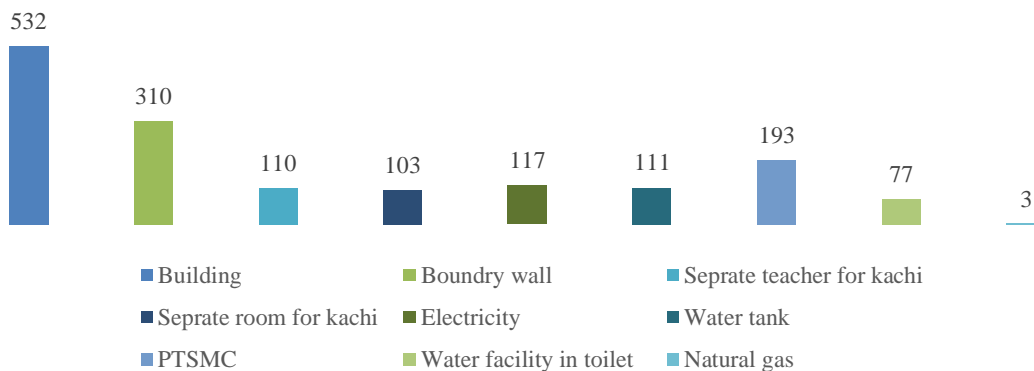
Source: EMIS, GoB, 2017

Figure 12: Rural Gross Enrolment Ratio at Primary Level (age 5-9)



Source: PSLM, Pakistan Bureau of Statistics, 2014-15

Figure 13: Available Facilities in Schools 2016-17



Source: EMIS, GoB, 2017

Table 18: Rural Education Indicators (%)

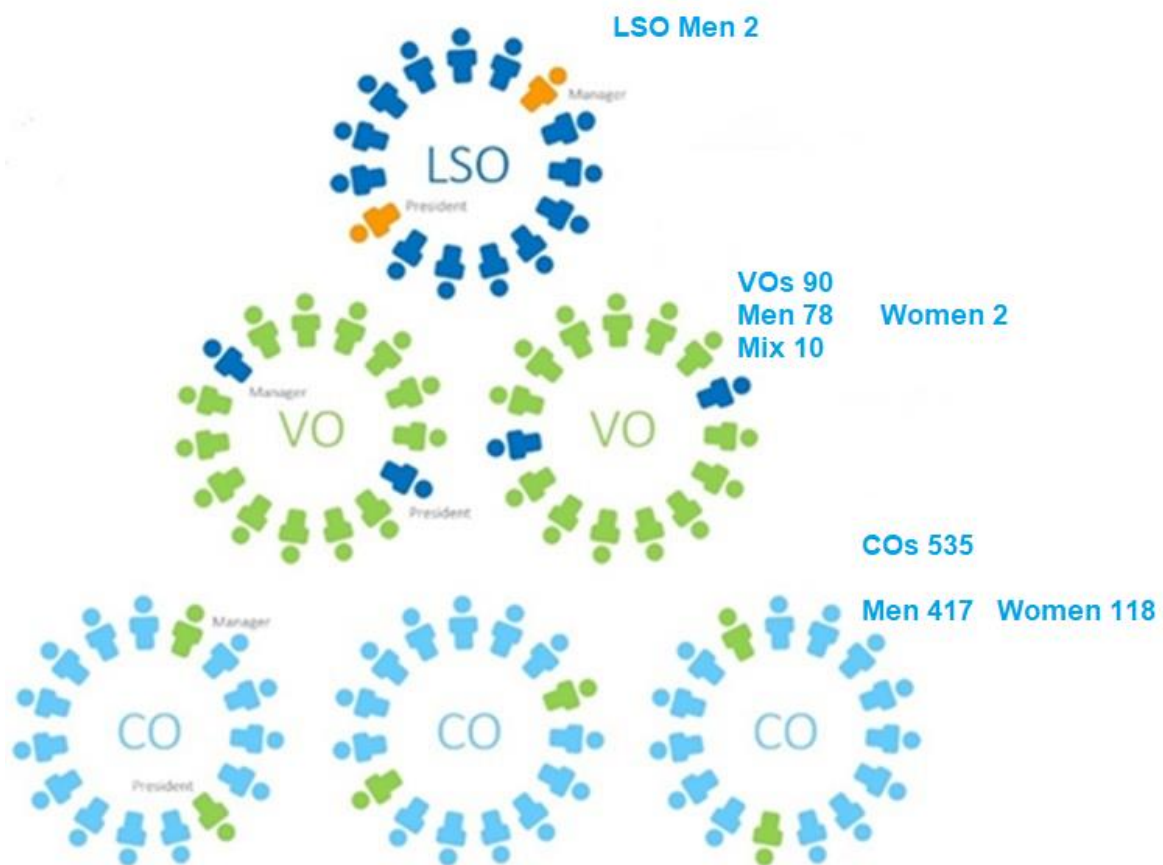
Indicators	Male	Female	Total
Gross Enrolment Ratio at Primary level (age 5-9)	50	14	33
Gross Enrolment Ratio at Primary level (age 4-9)	56	12	35
Net Enrolment Rate at Primary level (age 6-10)	50	14	34
Net Enrolment rate at Primary level (age 5-9)	42	11	28
Net Enrolment Rate at Primary level (age 4-9)	39	9	25
Primary level Enrolment in Government Schools a percentage of total Enrolment	82	94	84
Primary level Enrolment in Government Schools a percentage of total Primary Enrolment	82	94	84
Gross Enrolment Ratio at Middle level (age 11-13)	60	9	40
Gross Enrolment Ratio at Middle level (age 10-12)	47	7	32
Net Enrolment rate at Middle level (age 11-13)	17	5	12
Net Enrolment rate at Middle level (age 10-12)	6	3	5
Gross Enrolment Ratio at Matric level (age 14-15)	36	4	23
Gross Enrolment Ratio at Matric level (age 13-14)	34	4	23
Net Enrolment rate at Matric level (age 14-15)	12	0	8
Literacy-Population 10 years and older	38	5	24

Adult Literacy-population 15 years and older	33	3	19
--	----	---	----

Source: PSLM, Pakistan Bureau of Statistics, 2014-15

COMMUNITY INSTITUTIONS OF BRSP

Under BRDCEP, around 62,263 rural households in Killa Abdullah district will be mobilised and capacitated through three-tiered federated community organisations. Community members in the 33 rural union councils of the entire district Killa Abdullah, particularly women and marginalized, will be capacitated and assisted so that they can mobilise and form active operational and mature organisations, from COs to VOs, then LSOs and LSOs' networks. Following given figure shows number of COs, VOs and LSOs formed in the district till Jun 2017.



BIBLIOGRAPHY

1. EMIS. (2017). *Education Management Information System*, Education Department, Government of Balochistan.
2. MICS. (2010). *Multiple Indicator Cluster Survey (MICS)*. Planning and Development Department, Government of Balochistan.
3. PBS. (2017). *Census - 2017*, Pakistan Bureau of Statistics, Government of Pakistan, Islamabad.
4. PSLM. (2014-15). *Pakistan Social and Living Standards Measurement Survey (PSLM) 2014-15*. Statistics Division, Government of Pakistan, Statistics Division, Pakistan Bureau of Statistics, Islamabad.
5. P&D. (2011). *District Development Profile*, Planning and Development Department (P&D), Government of Balochistan and United Nations Children's Fund (UNICEF).
6. P&D. (2014-15). *Development Statistics of Balochistan*, Bureau of Statistics, Planning and Development Department (P&D), Government of Balochistan, Quetta.
7. UNOCHA. (2017). *MapAction*, United Nations Office for the Coordination of Humanitarian Affairs (UNOCHA), MapAction Version 2, downloaded from QGIS.