

HIGHLIGHTS

Important events, developments and successes of the Rural Support Programmes Network, and its member organisations, that stood out during the quarter.

PAGES 2-3, 11-12

OVERVIEW

Key statistical data of the social mobilisation outreach of the Rural Support Programmes across Pakistan.

PAGE 4

MAP & DATA

Mapping, and detailed statistical information on the social mobilisation outreach of the Rural Support Programmes, including cumulative and district-specific data.

PAGES 5-10

OUTREACH

#17

APRIL TO JUNE 2013

THE RURAL SUPPORT PROGRAMMES' SOCIAL MOBILISATION NEWSLETTER



RSPN

a publication of the
RURAL SUPPORT PROGRAMMES NETWORK

The RSPs model of Social Mobilisation

The Local Support Organisation (LSO) is the apex body of the three tier social organisational structure of the Rural Support Programmes (RSPs). It consists of a social structure where male and female Community Organisations (COs) are federated at the village-level into a Village Organisation (VO), which are then further agglomerated at the Union Council (UC) level to form the LSO. The RSPs of Pakistan have been pursuing the LSO programme for the last 7 years and by the end of March 2013 a total of 801 LSOs have been reported to have been formed across the country.

The basis of these LSOs are neighbourhood level COs which have a defined membership that meet regularly, undertake localised planning as a general body, identify local activists as their group leaders and facilitators and implement micro-level development activities which they can do themselves. Through this process of bottom-up planning, each CO thus identifies the financial and technical assistance required from its partner RSP. A Terms of Partnership is signed with the general body of each CO for each activity undertaken. This dialogue process is maintained with each CO on a regular basis and through the life of the CO, until it graduates to federate with other COs, forming higher level community bodies. The dialogue process emphasises the inclusion of the poorest and of women. The poorest are identified with communities either through a participatory poverty ranking or through a poverty score card.

Having had substantial experience in providing support to carry out horizontal social mobilisation, in 2006 RSPN started to delve into vertical forms of social mobilisation. Thus it started to support the RSPs on the future of social mobilisation, i.e. federating COs into village-level VOs and then further into union council-level LSOs. The LSO is then registered under law and thus it receives the status of a legal, formal and permanent civil society organisation. Laws under which LSOs are currently registered include the Social Welfare Act, the Companies' Ordinance and the Societies' Act. Furthermore these LSOs have the potential to federate at the tehsil, district and higher levels in order to create a critical mass, influencing government policies at a wider scale. This mobilisation strategy is described in Chart 1.

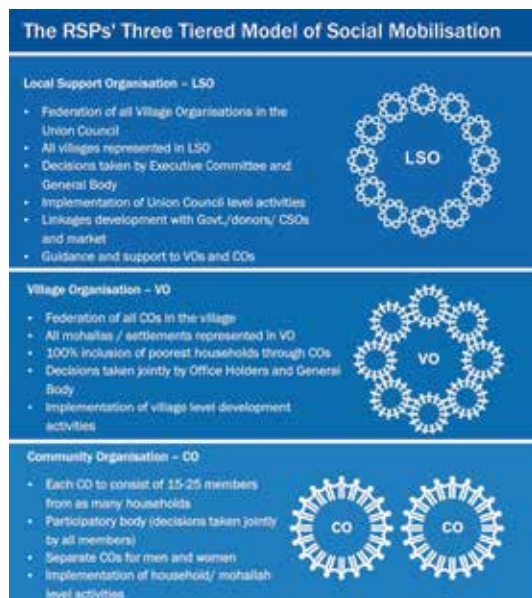
LSOs are a critical phase in the social mobilisation approach of the RSPs. As they represent higher levels of mobilisation and their activists have been associated with an RSP over many years, their capacities to mobilise



further communities effectively is fairly strong, as is their ability to lobby at local levels with the government and also do a variety of self help initiatives. The key objectives of LSO include:

- Scaling up social mobilisation and organising all the poor households in the LSO catchment area (commonly the Union Council) through locally trained activists or 'community resource persons.' LSOs are thus important in fostering and nurturing inclusive, democratic and accountable grass roots organisations of COs and VOs;
- Facilitating development of household, village and UC level development plans in consultation with the organised communities and supervise plan implementation;
- Providing an institutional platform to foster development linkages between public service providers, the private sector, other NGOs and the LSO membership;
- Lobbying to influence government's planning and policy formulation by strengthening civic participation in government planning processes i.e.

02-03

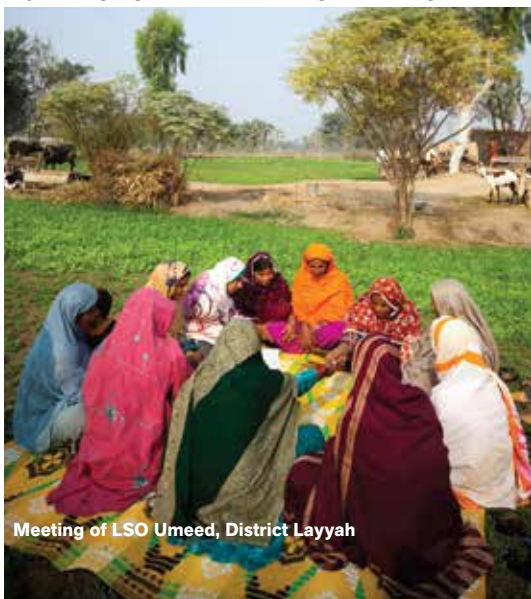




Meeting of LSO RCDF, Kotli, AJK

- commonly at the local government level (e.g.
- an LSO Network in Gilgit-Baltistan has had input into government planning and submitted PC1 to government for development projects). LSOs can also work with government line agencies to make planning more participatory;
 - Mobilising resources, both from internal and external sources to finance LSO operational costs and development plans

By coming together and federating at these higher tiers,



Meeting of LSO Umeed, District Layyah

communities are able to reap the benefits of a unified voice and to take advantage of the power of numbers. As a result, today LSOs are increasingly venturing out into newer areas of development such as providing free legal aid, connecting the poorest with government-funded social safety-net programmes, educating communities on governance, obtaining credit lines from commercial banks, developing linkages with government departments such as livestock and agriculture, protecting the environment, fighting the war against drugs and setting up village-based security patrols in unstable areas; amongst other innovative initiatives.

Some LSOs are further federating at the Tehsil and District levels. There are currently 15 LSO Networks in RSP areas. These LSO Networks are able to identify, effectively articulate and discuss issues of major concern at the district level. There have been examples of these Networks having built a collective strength to influence macro issues and policies (e.g. the work of Chitral Network with the religious leaders and district government to promote tolerance and peace between various communities in the district).



321,344

COMMUNITY ORGANISATIONS

5,327,469

ORGANISED HOUSEHOLDS

5,478,850

COMMUNITY ORGANISATION MEMBERS

801

LOCAL SUPPORT ORGANISATIONS

113

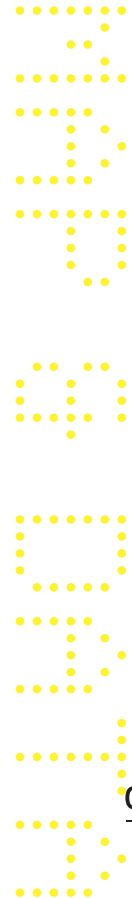
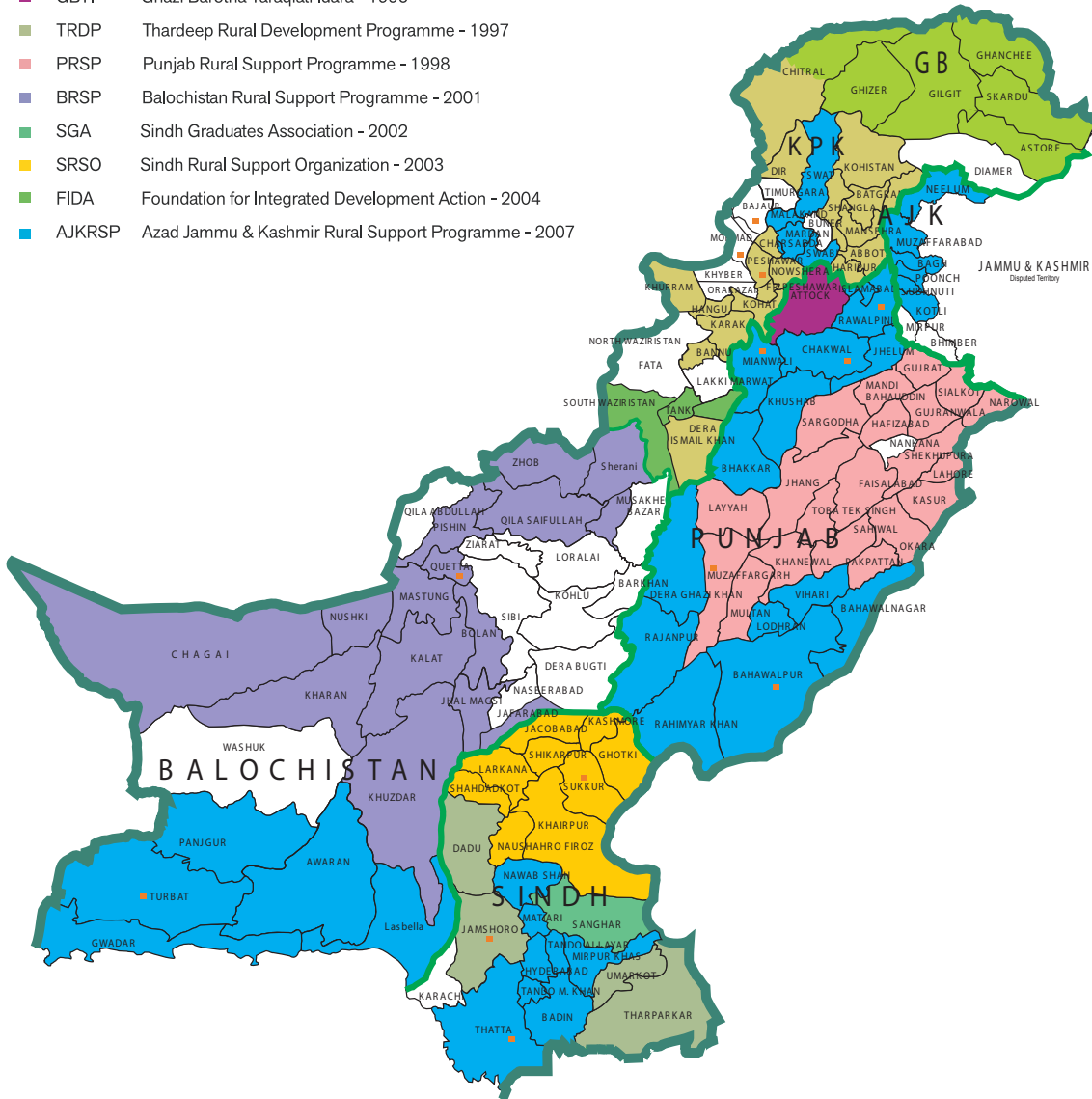
DISTRICTS + FATA/FRs WITH RSPs PRESENCE

3,638

RURAL UNION COUNCILS WITH RSPs PRESENCE

The Outreach of the Rural Support Programmes Across Pakistan

- AKRSP Aga Khan Rural Support Programme - 1982
- SRSP Sarhad Rural Support Programme - 1989
- NRSP National Rural Support Programme - 1992
- IRM Institute of Rural Management - 1993
- GBTI Ghazi Barotha Taraqiati Idara - 1995
- TRDP Thardeep Rural Development Programme - 1997
- PRSP Punjab Rural Support Programme - 1998
- BRSP Balochistan Rural Support Programme - 2001
- SGA Sindh Graduates Association - 2002
- SRSO Sindh Rural Support Organization - 2003
- FIDA Foundation for Integrated Development Action - 2004
- AJKRSP Azad Jammu & Kashmir Rural Support Programme - 2007



05-10

RSPs ARE PRESENT IN 110 OUT OF 131 DISTRICTS, AND 2 OUT OF 13 FATA/FRs



Rural Support Programmes (RSPs) in Pakistan, Cumulative Progress as of March 2013

| INDICATORS | | AJKRSP | AKRSP | BRSP | GBTI | NRSP | PRSP | SGA | SRSO | SRSP | TRDP | Total |
|--|---|---------|---------|---------|--------|-----------|-----------|--------|---------|-----------|---------|-----------|
| # of RSP working districts/areas** | | 8 | 7 | 14 | 3 | 50 | 21 | 1 | 9 | 20 | 4 | 113 |
| # of rural union councils with RSP presence* | | 136 | 145 | 204 | 22 | 1,971 | 703 | 13 | 338 | 527 | 113 | 3,638 |
| # of Organized Households | | 102,320 | 108,969 | 187,074 | 33,579 | 2,259,826 | 1,127,134 | 16,500 | 591,660 | 634,109 | 266,298 | 5,327,469 |
| # of Local Support Organisations (LSOs) | | 33 | 58 | 41 | 10 | 462 | 26 | - | 88 | 65 | 18 | 801 |
| # of Community Organizations (COs) formed | Women COs | 1,577 | 2,018 | 3,402 | 1,576 | 70,382 | 27,716 | 410 | 32,862 | 8,780 | 8,536 | 157,259 |
| | Men COs | 2,138 | 2,703 | 7,904 | 1,318 | 70,666 | 39,980 | 450 | 4,159 | 17,471 | 5,698 | 152,487 |
| | Mix COs | 1,035 | - | 54 | - | 8,498 | - | - | 40 | - | 1,971 | 11,598 |
| | Total | 4,750 | 4,721 | 11,360 | 2,894 | 149,546 | 67,696 | 860 | 37,061 | 26,251 | 16,205 | 321,344 |
| # of COs members | Women | 44,063 | 68,007 | 56,897 | 26,647 | 1,236,737 | 452,179 | 10,845 | 552,998 | 206,509 | 175,773 | 2,830,655 |
| | Men | 58,257 | 108,247 | 130,177 | 24,709 | 1,021,852 | 685,173 | 11,348 | 38,662 | 430,818 | 138,952 | 2,648,195 |
| | Total | 102,320 | 176,254 | 187,074 | 51,356 | 2,258,589 | 1,137,352 | 22,193 | 591,660 | 637,327 | 314,725 | 5,478,850 |
| Amount of savings of COs (Rs. Million) | Women | 24 | 129 | 5 | 4 | 235 | 56 | - | 109 | 38 | 81.240 | 683 |
| | Men | 12 | 371 | 9 | 5 | 1,061 | 64 | 1 | 7 | 96 | 119.480 | 1,745 |
| | Total | 36 | 501 | 14 | 9 | 1,296 | 120 | 1 | 116 | 134 | 200.72 | 2,428 |
| # of community members trained | Women | 10,954 | 58,754 | 46,684 | 11,156 | 1,094,293 | 140,360 | 4,830 | 216,024 | 58,911 | 85,697 | 1,727,663 |
| | Men | 6,385 | 27,804 | 107,141 | 3,773 | 923,929 | 322,773 | 4,825 | 9,460 | 85,388 | 87,648 | 1,579,126 |
| | Total | 17,339 | 86,558 | 153,825 | 14,929 | 2,018,222 | 463,133 | 9,655 | 225,484 | 144,299 | 173,345 | 3,306,789 |
| Community Investment Fund (CIF) | # of LSOs Managing CIF | 6 | 12 | 2 | 2 | 177 | 2 | - | 17 | - | 8 | 226 |
| | # of VOs Managing CIF | - | - | - | 4 | 65 | 33 | - | 3,528 | 291 | 1,307 | 5,228 |
| | # of CIF Borrowers | 1,094 | 2,055 | 20 | 36 | 16,956 | 2,415 | - | 94,183 | 24,191 | 17,101 | 158,051 |
| | Total amount of CIF disbursed (Rs. million) | 16 | 16 | 1 | 1 | 205 | 27 | - | 938 | 279 | 228 | 1,710.5 |
| Amount of micro-credit disbursement (Rs. Million) | Women | 79 | 195 | 9 | 297 | 27,240 | 3,858 | - | 2,784 | 329 | 2,465 | 37,256 |
| | Men | 59 | 833 | 16 | 78 | 41,470 | 5,585 | - | 616 | 302 | 2,458 | 51,417 |
| | Total | 138 | 1,028 | 25 | 375 | 68,710 | 9,443 | - | 3,400 | 631 | 4,923 | 88,673 |
| # of loans | Women | 4,764 | 74,813 | 1,156 | 19,956 | 1,874,065 | 284,870 | - | 178,199 | 29,840 | 191,478 | 2,659,141 |
| | Men | 3,217 | 546,311 | 1,600 | 5,531 | 2,457,653 | 405,739 | - | 42,982 | 28,508 | 148,619 | 3,640,160 |
| | Total | 7,981 | 621,124 | 2,756 | 25,487 | 4,331,718 | 690,609 | - | 221,181 | 58,348 | 340,097 | 6,299,301 |
| # of health micro insurance schemes | Women | - | 74,813 | - | 16,667 | 673,170 | - | - | 174,410 | 5,834 | 84,618 | 1,029,512 |
| | Men | - | 546,311 | - | 6,521 | 1,866,849 | - | - | 40,601 | 21,566 | 71,833 | 2,553,681 |
| | Total | - | 621,124 | - | 23,188 | 2,540,019 | - | - | 215,011 | 27,400 | 156,451 | 3,583,193 |
| # of PPI/CPI Schemes completed | | 1,637 | 3,576 | 1,026 | 514 | 26,348 | 6,433 | 16 | 39,555 | 7,258 | 56,501 | 142,864 |
| # of beneficiary households of completed CPIs | | 100,347 | 284,440 | 58,617 | 20,402 | 1,101,624 | 674,798 | - | 227,005 | 1,454,700 | 364,254 | 4,286,187 |
| Total Cost of completed CPIs (Rs. Million) | | 636 | 1,825 | 516 | 143 | 5,918 | 1,675 | 20 | 2,567 | 3,620 | 863 | 17,783 |
| # of community schools established | | 355 | 867 | 141 | 12 | 515 | 209 | 25 | 2 | 73 | 113 | 2,312 |
| # of students enrolled | Girls | 11,370 | 2,900 | 4,453 | 780 | 8,246 | 7,215 | 3,526 | 25 | 1,991 | 1,947 | 42,453 |
| | Boys | 9,922 | 7,375 | 5,543 | 608 | 9,213 | 5,444 | 5,110 | 55 | 2,470 | 707 | 46,447 |
| | Total | 21,292 | 10,275 | 9,996 | 1,388 | 17,459 | 12,659 | 8,636 | 80 | 4,461 | 2,654 | 88,900 |
| # of adults literated or graduated | Women | - | - | - | - | 22,888 | - | - | - | 55 | - | 22,943 |
| | Men | - | - | - | - | 2,494 | - | - | - | 38 | - | 2,532 |
| | Total | - | - | - | - | 25,382 | - | - | - | 93 | - | 25,475 |
| # of traditional birth attendants / health workers trained | Women | 31 | 1,243 | 1,508 | 95 | 3,153 | 8,442 | - | 4,777 | 1,066 | 867 | 21,182 |
| | Men | - | - | - | - | - | 1,770 | - | - | 467 | 675 | 2,912 |
| | Total | 31 | 1,243 | 1,508 | 95 | 3,153 | 10,212 | - | 4,777 | 1,533 | 1,542 | 24,094 |

Note: ** The 112 include 110 districts and 2 Federally Administered Tribal Areas. Punjab RSP after restructuring in mid 2011, closed its operation in four districts, Chiniot, Nankana Sahib, DG Khan and Rajanpur.
* The total figure for districts/areas and union councils excludes 24 overlapping districts (presence of multiple RSP) and 534 overlapping union councils

Rural Support Programmes (RSPs) in Pakistan, District-wise RSPs Coverage/Outreach as of March 2013

| S. No. | Name of District | Total rural and Peri-Urban UCs in the District | Union Councils Having RSPs Presence | | | | Total rural HHs in the District (1998 Census) | Households Organised | | | | Community Organisations Formed | | | RSP |
|---------------------------------|-------------------------|--|-------------------------------------|--------------------|-----------------------|-----------------------------|---|-----------------------|--------------------|-----------------------|-----------------------------|--------------------------------|--------------------|-----------------------|------|
| | | | # as of December 2012 | # as of March 2013 | % increase during Qtr | % coverage as of March 2013 | | # as of December 2012 | # as of March 2013 | % increase during Qtr | % coverage as of March 2013 | # as of December 2012 | # as of March 2013 | % increase during Qtr | |
| ISLAMABAD | | | | | | | | | | | | | | | |
| 1 | ICT | 12 | 12 | 12 | - | 100.0 | 43,884 | 21,134 | 25,415 | 20.3 | 57.9 | 1,317 | 1,535 | 16.6 | NRSP |
| 1 | Sub Total | 12 | 12 | 12 | - | 100.0 | 43,884 | 21,134 | 25,415 | 20.3 | 57.9 | 1,317 | 1,535 | 16.6 | |
| BALUCHISTAN | | | | | | | | | | | | | | | |
| 1 | Awaran | 8 | 8 | 8 | - | 100.0 | 22,144 | 9,890 | 9,890 | - | 44.7 | 598 | 598 | - | NRSP |
| 2 | Barkhan | 8 | - | - | - | - | 13,787 | - | - | - | - | - | - | - | - |
| 3 | Bolan | 27 | 1 | 1 | - | 3.7 | 35,003 | 2,434 | 2,434 | - | 7.0 | 109 | 109 | - | BRSP |
| 4 | Chaqhi | 10 | - | - | - | - | 13,570 | - | - | - | - | - | - | - | - |
| 5 | Dera Bugti | 12 | - | - | - | - | 27,337 | - | - | - | - | - | - | - | - |
| 6 | Gawadar | 13 | 13 | 13 | - | 100.0 | 16,691 | 19,280 | 19,310 | 0.2 | 115.7 | 860 | 862 | 0.2 | NRSP |
| 7 | Harnai | 10 | - | - | - | - | - | - | - | - | - | - | - | - | - |
| 8 | Jhal Magsi | 9 | 9 | 9 | - | 100.0 | 16,184 | 9,589 | 9,708 | 1.2 | 60.0 | 569 | 577 | 1.4 | BRSP |
| 9 | Jaffarabad | 46 | 29 | 29 | - | 63.0 | 52,664 | 8,739 | 8,739 | - | 16.6 | 163 | 163 | - | BRSP |
| 10 | Kallat | 18 | 15 | 15 | - | 83.3 | 31,396 | 28,829 | 28,829 | - | 91.8 | 1,870 | 1,870 | - | BRSP |
| 11 | Kech / Turbat | 38 | 38 | 38 | - | 100.0 | 70,164 | 48,560 | 48,560 | - | 69.2 | 2,244 | 2,244 | - | NRSP |
| 12 | Kharan | 7 | 7 | 7 | - | 100.0 | 14,328 | 15,136 | 15,739 | 4.0 | 109.8 | 903 | 942 | 4.3 | BRSP |
| 13 | Khuzdar | 35 | 28 | 28 | - | 80.0 | 60,032 | 33,497 | 34,100 | 1.8 | 56.8 | 2,060 | 2,060 | - | BRSP |
| 14 | Killa Abdullah | 25 | - | - | - | - | 44,863 | - | - | - | - | - | - | - | - |
| 15 | Killa Saifullah | 15 | 13 | 13 | - | 86.7 | 28,796 | 19,117 | 19,117 | - | 66.4 | 1,220 | 1,220 | - | BRSP |
| 16 | Kohlu | 8 | - | - | - | - | 15,156 | - | - | - | - | - | - | - | - |
| 17 | Lasbella | 22 | - | - | - | - | 34,637 | 1,739 | 1,739 | - | 5.0 | 103 | 103 | - | NRSP |
| 18 | Loralai | 20 | 20 | 20 | - | 100.0 | 39,770 | 2,588 | 2,588 | - | 6.5 | 134 | 134 | - | BRSP |
| 19 | Mastung | 13 | 13 | 13 | - | 100.0 | 18,831 | 18,831 | 18,831 | - | 100.0 | 1,389 | 1,389 | - | BRSP |
| 20 | Musa Khel | 10 | - | - | - | - | 19,126 | - | - | - | - | - | - | - | - |
| 21 | Naseerabad | 24 | - | - | - | - | 34,981 | - | - | - | - | - | - | - | - |
| 22 | Noshki | 10 | - | 1 | - | 10.0 | 13,570 | - | 65 | - | - | - | 4 | - | BRSP |
| 23 | Panjgoor | 16 | 16 | 16 | - | 100.0 | 35,703 | 16,949 | 16,949 | - | 47.5 | 1,042 | 1,042 | - | NRSP |
| 24 | Pishin | 38 | 35 | 35 | - | 92.1 | 55,654 | 20,533 | 22,340 | 8.8 | 40.1 | 1,298 | 1,459 | 12.4 | BRSP |
| 25 | Quetta | 47 | 5 | 5 | - | 10.6 | 25,232 | 939 | 939 | - | 3.7 | 88 | 88 | - | BRSP |
| 26 | Sherani | 7 | 7 | 7 | - | 100.0 | 10,608 | 2,520 | 2,520 | - | 23.8 | 118 | 118 | - | BRSP |
| 27 | Sibi | 11 | - | - | - | - | 19,815 | - | - | - | - | - | - | - | - |
| 28 | Washuk | 9 | - | - | - | - | 18,422 | - | - | - | - | - | - | - | - |
| 29 | Zhob | 21 | 21 | 21 | - | 100.0 | 21,118 | 20,612 | 21,125 | 2.5 | 100.0 | 1,197 | 1,227 | 2.5 | BRSP |
| 30 | Ziarat | 10 | - | - | - | - | 4,609 | - | - | - | - | - | - | - | - |
| 19 | Sub Total | 547 | 278 | 279 | 0.4 | 51.0 | 814,191 | 279,782 | 283,522 | 1.3 | 34.8 | 15,965 | 16,209 | 1.5 | |
| KHYBER PUKHTUNKHWA (KPK) | | | | | | | | | | | | | | | |
| 1 | Abbottabad | 51 | 51 | 51 | - | 100.0 | 115,585 | 46,600 | 48,996 | 5.1 | 42.4 | 1,538 | 1,650 | 7.3 | SRSP |
| 2 | Banu | 49 | - | - | - | - | 65,010 | - | - | - | - | - | - | - | - |
| 3 | Battagram | 20 | 20 | 20 | - | 100.0 | 46,053 | 35,889 | 36,501 | 1.7 | 79.3 | 1,462 | 1,496 | 2.3 | SRSP |
| 4 | Buner | 27 | 5 | 5 | - | 18.5 | 56,591 | 269 | 269 | - | 0.5 | 19 | 19 | - | NRSP |
| 4 | Buner (overlapping) | 27 | 15 | 21 | 40.0 | 77.8 | 56,591 | 3,383 | 3,733 | 10.3 | 6.6 | 151 | 165 | 9.3 | SRSP |
| 5 | Charsadda | 49 | 28 | 28 | - | 57.1 | 102,361 | 12,926 | 12,926 | - | 12.6 | 736 | 736 | - | NRSP |
| 5 | Charsadda (overlapping) | 49 | 37 | 37 | - | 75.5 | 102,361 | 31,704 | 36,196 | 14.2 | 35.4 | 1,328 | 1,549 | 16.6 | SRSP |

Rural Support Programmes (RSPs) in Pakistan, District-wise RSPs Coverage/Outreach as of March 2013

| S. No. | Name of District | Total rural and Peri-Urban UCs in the District | Union Councils Having RSPs Presence | | | | Total rural HHs in the District (1998 Census) | Households Organised | | | | Community Organisations Formed | | | RSP |
|--------------|----------------------------|--|-------------------------------------|--------------------|-----------------------|-----------------------------|---|-----------------------|--------------------|-----------------------|-----------------------------|--------------------------------|--------------------|-----------------------|-------|
| | | | # as of December 2012 | # as of March 2013 | % increase during Qtr | % coverage as of March 2013 | | # as of December 2012 | # as of March 2013 | % increase during Qtr | % coverage as of March 2013 | # as of December 2012 | # as of March 2013 | % increase during Qtr | |
| 6 | Chitral | 24 | 51 | 51 | - | 212.5 | 36,879 | 33,188 | 33,188 | - | 90.0 | 1,439 | 1,439 | - | AKRSP |
| 6 | Chitral (overlapping) | 24 | 24 | 24 | - | 100.0 | 36,879 | 23,596 | 24,883 | 5.5 | 67.5 | 734 | 791 | 7.8 | SRSP |
| 7 | Dir Upper | 28 | 19 | 21 | 10.5 | 75.0 | 70,230 | 31,623 | 31,623 | - | 45.0 | 1,447 | 1,482 | 2.4 | SRSP |
| 8 | Dir Lower | 37 | - | 15 | - | 40.5 | 73,626 | - | 1,993 | - | - | - | 85 | - | - |
| 9 | D.I.Khan | 47 | - | 3 | - | 6.4 | 99,528 | - | 1,225 | - | - | - | 47 | - | - |
| 10 | Hangu | 19 | 17 | 17 | - | 89.5 | 24,536 | 14,204 | 14,204 | - | 57.9 | 505 | 505 | - | SRSP |
| 11 | Haripur | 45 | 4 | 4 | - | 8.9 | 94,383 | 6,859 | 6,969 | 1.6 | 7.4 | 687 | 700 | 1.9 | GBTI |
| 11 | Haripur (overlapping) | 45 | 45 | 45 | - | 100.0 | 94,383 | 39,747 | 41,322 | 4.0 | 43.8 | 1,255 | 1,331 | 6.1 | SRSP |
| 12 | Karak | 21 | 21 | 21 | - | 100.0 | 40,734 | 49,351 | 49,483 | 0.3 | 121.5 | 1,990 | 1,997 | 0.4 | SRSP |
| 13 | Kohat | 32 | 29 | 32 | 10.3 | 100.0 | 55,911 | 64,402 | 69,685 | 8.2 | 124.6 | 2,568 | 3,129 | 21.8 | SRSP |
| 14 | Kohistan | 38 | 38 | 38 | - | 100.0 | 74,041 | 34,380 | 34,916 | 1.6 | 47.2 | 2,081 | 2,238 | 7.5 | SRSP |
| 15 | Lakki Marwat | 33 | - | - | - | - | 48,700 | - | - | - | - | - | - | - | - |
| 16 | Malakand P.A | 28 | 25 | 25 | - | 89.3 | 45,731 | 28,875 | 29,040 | 0.6 | 63.5 | 1,832 | 1,848 | 0.9 | NRSP |
| 16 | Malakand P.A (overlapping) | 28 | 12 | 12 | - | 42.9 | 45,731 | 2,234 | 3,235 | 44.8 | 7.1 | 71 | 112 | 57.7 | SRSP |
| 17 | Mansehra | 59 | 55 | 55 | - | 93.2 | 167,833 | 105,204 | 109,246 | 3.8 | 65.1 | 3,660 | 3,836 | 4.8 | SRSP |
| 18 | Mardan | 75 | 63 | 63 | - | 84.0 | 141,386 | 51,891 | 53,799 | 3.7 | 38.1 | 3,675 | 3,781 | 2.9 | NRSP |
| 18 | Mardan(overlapping) | 75 | 20 | 20 | - | 26.7 | 141,386 | 42,732 | 42,732 | - | 30.2 | 1,838 | 1,838 | - | SRSP |
| 19 | Nowshera | 48 | 10 | 10 | - | 20.8 | 84,851 | 17,478 | 18,069 | 3.4 | 21.3 | 745 | 769 | 3.2 | SRSP |
| 19 | Nowshera (overlapping) | 48 | 13 | 13 | - | 27.1 | 84,851 | 2,163 | 2,163 | - | 2.5 | 101 | 101 | - | NRSP |
| 20 | Peshawar | 67 | 10 | 17 | 70.0 | 25.4 | 132,070 | 13,592 | 15,460 | 13.7 | 11.7 | 629 | 746 | 18.6 | SRSP |
| 21 | Shangla | 28 | 20 | 20 | - | 71.4 | 53,994 | 27,671 | 27,671 | - | 51.2 | 1,478 | 1,546 | 4.6 | SRSP |
| 22 | Swabi | 55 | 4 | 6 | 50.0 | 10.9 | 112,083 | 7,378 | 7,828 | 6.1 | 7.0 | 579 | 615 | 6.2 | GBTI |
| 22 | Swabi (overlapping) | 55 | 38 | 38 | - | 69.1 | 112,083 | 25,850 | 26,117 | 1.0 | 23.3 | 1,644 | 1,660 | 1.0 | NRSP |
| 23 | Swat | 65 | 19 | 19 | - | 29.2 | 125,377 | 6,488 | 6,488 | - | 5.2 | 298 | 298 | - | NRSP |
| 23 | Swat (overlapping) | 65 | 51 | 60 | 17.6 | 92.3 | 125,377 | 13,348 | 19,748 | 47.9 | 15.8 | 538 | 812 | 50.9 | SRSP |
| 24 | Tank | 16 | - | - | - | - | 22,411 | - | - | - | - | - | - | - | - |
| 19 | Sub Total | 961 | 576 | 606 | 5.2 | 63.1 | 1,889,904 | 773,025 | 809,708 | 4.7 | 42.8 | 35,028 | 37,321 | 6.5 | |
| SINDH | | | | | | | | | | | | | | | |
| 1 | Badin | 46 | 46 | 46 | - | 100.0 | 185,266 | 94,230 | 99,633 | 5.7 | 53.8 | 5,142 | 5,469 | 6.4 | NRSP |
| 2 | Dadu | 52 | 30 | 30 | - | 57.7 | 164,849 | 36,916 | 37,116 | 0.5 | 22.5 | 1,534 | 1,545 | 0.7 | TRDP |
| 3 | Ghotki | 46 | 37 | 37 | - | 80.4 | 158,489 | 122,316 | 122,985 | 0.5 | 77.6 | 6,917 | 6,957 | 0.6 | SRSO |
| 4 | Hyderabad | 37 | 20 | 20 | - | 54.1 | 128,856 | 11,959 | 11,959 | - | 9.3 | 723 | 723 | - | NRSP |
| 5 | Jacobabad | 40 | 29 | 29 | - | 72.5 | 90,682 | 84,893 | 84,893 | - | 93.6 | 5,074 | 5,074 | - | SRSO |
| 6 | Jamshoro | 28 | 12 | 12 | - | 42.9 | 88,816 | 26,635 | 26,725 | 0.3 | 30.1 | 549 | 554 | 0.9 | TRDP |
| 7 | Karachi | - | - | - | - | - | - | - | - | - | - | - | - | - | - |
| 8 | Kashmore | 37 | 37 | 37 | - | 100.0 | 110,969 | 80,708 | 80,708 | - | 72.7 | 4,787 | 4,787 | - | SRSO |
| 9 | Khairpur | 76 | 49 | 49 | - | 64.5 | 208,270 | 70,400 | 70,400 | - | 33.8 | 4,078 | 4,078 | - | SRSO |
| 10 | Larkana | 44 | 38 | 38 | - | 86.4 | 121,639 | 37,589 | 37,589 | - | 30.9 | 3,605 | 3,605 | - | SRSO |
| 11 | Matiari | 19 | 15 | 15 | - | 78.9 | 47,026 | 23,129 | 23,129 | - | 49.2 | 1,770 | 1,770 | - | NRSP |
| 12 | Mirpur Khas | 41 | 41 | 41 | - | 100.0 | 111,973 | 65,160 | 69,505 | 6.7 | 62.1 | 3,936 | 4,143 | 5.3 | NRSP |
| 13 | Nausharo Feroz | 51 | 39 | 39 | - | 76.5 | 164,715 | 24,710 | 24,710 | - | 15.0 | 1,729 | 1,729 | - | SRSO |
| 14 | Nawabshah | 51 | 27 | 27 | - | 52.9 | 141,671 | 3,092 | 3,092 | - | 2.2 | 564 | 564 | - | NRSP |
| 15 | Shahdad Kot | 40 | 34 | 34 | - | 85.0 | 128,408 | 29,475 | 29,475 | - | 23.0 | 2,221 | 2,221 | - | SRSO |
| 16 | Sanghar | 55 | 11 | 13 | 18.2 | 23.6 | 209,191 | 15,430 | 16,500 | 6.9 | 7.9 | 850 | 860 | 1.2 | SGA |
| 17 | Shikarpur | 51 | 50 | 50 | - | 98.0 | 122,340 | 104,557 | 104,557 | - | 85.5 | 5,997 | 5,997 | - | SRSO |
| 18 | Sukkur | 46 | 25 | 25 | - | 54.3 | 78,458 | 36,343 | 36,343 | - | 46.3 | 2,613 | 2,613 | - | SRSO |
| 19 | Tando Allahyar | 19 | 12 | 12 | - | 63.2 | 47,082 | 12,702 | 12,702 | - | 27.0 | 1,025 | 1,025 | - | NRSP |
| 20 | Tando Muhammad Khan | 16 | 13 | 13 | - | 81.3 | 39,648 | 17,130 | 17,546 | 2.4 | 44.3 | 1,039 | 1,065 | 2.5 | NRSP |
| 21 | Tharparkar | 44 | 44 | 44 | - | 100.0 | 159,486 | 159,335 | 159,495 | 0.1 | 100.0 | 11,447 | 11,455 | 0.1 | TRDP |

Rural Support Programmes (RSPs) in Pakistan, District-wise RSPs Coverage/Outreach as of March 2013

| S. No. | Name of District | Total rural and Peri-Urban UCs in the District | Union Councils Having RSPs Presence | | | | Total rural HHs in the District (1998 Census) | Households Organised | | | | Community Organisations Formed | | | RSP |
|---------------|----------------------------|--|-------------------------------------|--------------------|-----------------------|-----------------------------|---|-----------------------|--------------------|-----------------------|-----------------------------|--------------------------------|--------------------|-----------------------|------|
| | | | # as of December 2012 | # as of March 2013 | % increase during Qtr | % coverage as of March 2013 | | # as of December 2012 | # as of March 2013 | % increase during Qtr | % coverage as of March 2013 | # as of December 2012 | # as of March 2013 | % increase during Qtr | |
| 22 | Thattha | 55 | 52 | 52 | - | 94.5 | 202,554 | 37,033 | 37,210 | 0.5 | 18.4 | 2,115 | 2,124 | 0.4 | NRSP |
| 23 | Umer Kot | 27 | 27 | 27 | - | 100.0 | 106,515 | 42,908 | 42,962 | 0.1 | 40.3 | 2,648 | 2,651 | 0.1 | TRDP |
| 22 | Sun Total | 921 | 688 | 690 | 0.3 | 74.9 | 2,816,903 | 1,136,650 | 1,149,234 | 1.1 | 40.8 | 70,363 | 71,009 | 0.9 | |
| PUNJAB | | | | | | | | | | | | | | | |
| 1 | Attock | 65 | 12 | 12 | - | 18.5 | 164,849 | 18,442 | 18,782 | 1.8 | 11.4 | 1,559 | 1,579 | 1.3 | GBTI |
| 1 | Attock (overlapping) | 65 | 64 | 64 | - | 98.5 | 164,849 | 64,157 | 66,651 | 3.9 | 40.4 | 3,935 | 4,318 | 9.7 | NRSP |
| 2 | Bahawalnagar | 101 | 101 | 101 | - | 100.0 | 158,489 | 208,536 | 212,125 | 1.7 | 133.8 | 15,166 | 15,377 | 1.4 | NRSP |
| 3 | Bahawalpur | 97 | 97 | 97 | - | 100.0 | 128,856 | 247,927 | 264,491 | 6.7 | 205.3 | 16,980 | 17,855 | 5.2 | NRSP |
| 4 | Bhakkar | 42 | 40 | 40 | - | 95.2 | 90,682 | 138,197 | 143,276 | 3.7 | 158.0 | 8,782 | 8,957 | 2.0 | NRSP |
| 5 | Chakwal | 65 | 60 | 60 | - | 92.3 | 88,816 | 61,489 | 69,180 | 12.5 | 77.9 | 3,372 | 3,764 | 11.6 | NRSP |
| 6 | Chiniot* | 42 | - | - | - | - | 81,625 | 1,069 | 1,069 | - | - | 60 | 60 | - | PRSP |
| 7 | D G Khan | 55 | 50 | 50 | - | 90.9 | 208,270 | 130,916 | 131,480 | 0.4 | 63.1 | 9,483 | 9,526 | 0.5 | NRSP |
| 7 | D G Khan (overlapping)* | 55 | - | - | - | - | 208,270 | 20,260 | 20,260 | - | 9.7 | 1,302 | 1,302 | - | PRSP |
| 8 | Faisalabad | 71 | 71 | 71 | - | 100.0 | 121,639 | 56,225 | 57,935 | 3.0 | 47.6 | 3,697 | 3,802 | 2.8 | PRSP |
| 9 | Gujranwala | 97 | 62 | 62 | - | 63.9 | 47,026 | 49,110 | 50,598 | 3.0 | 107.6 | 2,848 | 2,919 | 2.5 | PRSP |
| 10 | Gujrat | 87 | 35 | 35 | - | 40.2 | 111,973 | 45,489 | 46,713 | 2.7 | 41.7 | 2,935 | 2,995 | 2.0 | PRSP |
| 11 | Hafiz Abad | 40 | 16 | 16 | - | 40.0 | 164,715 | 26,397 | 27,409 | 3.8 | 16.6 | 1,640 | 1,695 | 3.4 | PRSP |
| 12 | Jhang | 79 | 21 | 21 | - | 26.6 | 141,671 | 26,042 | 26,809 | 2.9 | 18.9 | 1,792 | 1,840 | 2.7 | PRSP |
| 13 | Jhelum | 50 | 35 | 35 | - | 70.0 | 128,408 | 43,045 | 43,045 | - | 33.5 | 2,243 | 2,380 | 6.1 | NRSP |
| 14 | Kasur | 89 | 7 | 7 | - | 7.9 | 122,340 | 11,035 | 11,035 | - | 9.0 | 847 | 847 | - | PRSP |
| 15 | Khanewal | 98 | 19 | 19 | - | 19.4 | 122,340 | 25,203 | 25,886 | 2.7 | 21.2 | 1,542 | 1,587 | 2.9 | PRSP |
| 15 | Khanewal (overlapping) | 98 | 70 | 70 | - | 71.4 | 78,458 | 17,775 | 17,775 | - | 22.7 | 1,662 | 1,662 | - | NRSP |
| 16 | Khushab | 49 | 45 | 45 | - | 91.8 | 47,082 | 124,354 | 130,559 | 5.0 | 277.3 | 7,164 | 7,503 | 4.7 | NRSP |
| 17 | Lahore | 30 | 27 | 27 | - | 90.0 | 39,648 | 38,241 | 39,475 | 3.2 | 99.6 | 2,526 | 2,628 | 4.0 | PRSP |
| 18 | Layyah | 44 | 24 | 24 | - | 54.5 | 159,486 | 118,224 | 119,394 | 1.0 | 74.9 | 7,839 | 7,914 | 1.0 | PRSP |
| 19 | Lodhran | 70 | 70 | 70 | - | 100.0 | 202,554 | 46,705 | 46,705 | - | 23.1 | 3,886 | 3,886 | - | NRSP |
| 19 | Lodhran (overlapping) | 70 | 5 | 5 | - | 7.1 | 202,554 | 2,740 | 3,501 | 27.8 | 1.7 | 185 | 234 | 26.5 | PRSP |
| 20 | Mandi Bahauddin | 65 | 53 | 53 | - | 81.5 | 106,515 | 32,499 | 33,427 | 2.9 | 31.4 | 2,129 | 2,188 | 2.8 | PRSP |
| 21 | Mianwali | 53 | 56 | 56 | - | 105.7 | 120,486 | 73,167 | 73,767 | 0.8 | 61.2 | 4,166 | 4,201 | 0.8 | NRSP |
| 22 | Multan | 69 | 22 | 22 | - | 31.9 | 261,678 | 35,212 | 35,212 | - | 13.5 | 2,382 | 2,382 | - | PRSP |
| 22 | Multan (overlapping) | 69 | 58 | 58 | - | 84.1 | 261,678 | 17,654 | 17,654 | - | 6.7 | 1,958 | 1,958 | - | NRSP |
| 23 | Muzaffargarh | 93 | 16 | 16 | - | 17.2 | 317,647 | 145,975 | 146,359 | 0.3 | 46.1 | 8,862 | 8,884 | 0.2 | PRSP |
| 23 | Muzaffargarh (overlapping) | 93 | 24 | 24 | - | 25.8 | 317,647 | - | - | - | - | - | - | - | NRSP |
| 24 | Nanakana Sahib* | 65 | - | - | - | - | 187,137 | 695 | 695 | - | 0.4 | 45 | 45 | - | PRSP |
| 25 | Narowal | 74 | 61 | 61 | - | 82.4 | 150,406 | 103,474 | 106,856 | 3.3 | 71.0 | 5,074 | 5,200 | 2.5 | PRSP |
| 26 | Okara | 111 | 27 | 27 | - | 24.3 | 270,191 | 31,099 | 32,179 | 3.5 | 11.9 | 2,053 | 2,125 | 3.5 | PRSP |
| 27 | Pakpattan | 63 | 20 | 20 | - | 31.7 | 174,888 | 21,722 | 22,352 | 2.9 | 12.8 | 1,404 | 1,446 | 3.0 | PRSP |
| 27 | Pakpattan (overlapping) | 63 | 54 | 54 | - | 85.7 | 174,888 | 12,295 | 12,295 | - | 7.0 | 1,486 | 1,486 | - | NRSP |
| 28 | Rahim Yar Khan | 103 | 103 | 103 | - | 100.0 | 338,677 | 74,190 | 74,588 | 0.5 | 22.0 | 6,801 | 6,828 | 0.4 | NRSP |
| 29 | Rajapur | 44 | 43 | 43 | - | 97.7 | 133,182 | 98,421 | 99,426 | 1.0 | 74.7 | 6,620 | 6,676 | 0.8 | NRSP |
| 29 | Rajapur (overlapping)* | 44 | - | - | - | - | 133,182 | 18,650 | 18,650 | - | 14.0 | 1,218 | 1,218 | - | PRSP |
| 30 | Rawalpindi | 58 | 58 | 58 | - | 100.0 | 256,911 | 83,303 | 88,881 | 6.7 | 34.6 | 5,558 | 6,018 | 8.3 | NRSP |
| 31 | Sahiwal | 83 | 39 | 39 | - | 47.0 | 227,413 | 41,222 | 42,288 | 2.6 | 18.6 | 2,584 | 2,655 | 2.7 | PRSP |
| 31 | Sahiwal (overlapping) | 83 | 52 | 52 | - | 62.7 | 227,413 | 12,414 | 12,414 | - | 5.5 | 1,201 | 1,201 | - | NRSP |
| 32 | Sargodha | 132 | 57 | 57 | - | 43.2 | 303,958 | 45,190 | 46,436 | 2.8 | 15.3 | 2,834 | 2,906 | 2.5 | PRSP |
| 32 | Sargodha (overlapping) | 132 | 116 | 116 | - | 87.9 | 303,958 | 8,735 | 10,679 | 22.3 | 3.5 | 758 | 940 | 24.0 | NRSP |
| 33 | Sheikhupura | 91 | 10 | 10 | - | 11.0 | 207,805 | 23,004 | 23,885 | 3.8 | 11.5 | 1,502 | 1,547 | 3.0 | PRSP |
| 34 | Sialkot | 94 | 89 | 89 | - | 94.7 | 275,204 | 146,802 | 151,757 | 3.4 | 55.1 | 6,665 | 6,839 | 2.6 | PRSP |
| 35 | Toba Tek Singh | 79 | 22 | 22 | - | 27.8 | 187,555 | 35,797 | 36,954 | 3.2 | 19.7 | 2,371 | 2,438 | 2.8 | PRSP |

Rural Support Programmes (RSPs) in Pakistan, District-wise RSPs Coverage/Outreach as of March 2013

| S. No. | Name of District | Total rural and Peri-Urban UCs in the District | Union Councils Having RSPs Presence | | | | Total rural HHs in the District (1998 Census) | Households Organised | | | | Community Organisations Formed | | | RSP |
|---|---------------------------------|--|-------------------------------------|--------------------|-----------------------|-----------------------------|---|-----------------------|--------------------|-----------------------|-----------------------------|--------------------------------|--------------------|-----------------------|--------|
| | | | # as of December 2012 | # as of March 2013 | % increase during Qtr | % coverage as of March 2013 | | # as of December 2012 | # as of March 2013 | % increase during Qtr | % coverage as of March 2013 | # as of December 2012 | # as of March 2013 | % increase during Qtr | |
| 35 | Toba Tek Singh (overlapping) | 79 | 61 | 61 | - | 77.2 | 187,555 | 13,594 | 13,594 | - | 7.2 | 1,545 | 1,545 | - | NRSP |
| 36 | Vehari | 87 | 80 | 80 | - | 92.0 | 257,583 | 39,089 | 39,089 | - | 15.2 | 3,149 | 3,149 | - | NRSP |
| 34 | Sub Total | 2,635 | 1,773 | 1,773 | - | 67.3 | 6,367,781 | 2,635,781 | 2,713,590 | 3.0 | 42.6 | 173,810 | 178,505 | 2.7 | |
| AZAD JAMMU AND KASHMIR (AJK) | | | | | | | | | | | | | | | |
| 1 | Bagh | 19 | 19 | 19 | - | 100.0 | 46,470 | 21,183 | 22,661 | 7.0 | 48.8 | 1,131 | 1,205 | 6.5 | NRSP |
| 1 | Bagh (overlapping) | 19 | 10 | 10 | - | 52.6 | 46,470 | 672 | 672 | - | 1.4 | 32 | 32 | - | AJKRSP |
| 2 | Hattian | 13 | 5 | 5 | - | 38.5 | 21,296 | 12,914 | 12,914 | - | 60.6 | 593 | 593 | - | NRSP |
| 2 | Hattian (overlapping) | 13 | 10 | 10 | - | 76.9 | 21,296 | 16,770 | 16,770 | - | 78.7 | 827 | 827 | - | AJKRSP |
| 3 | Kotli | 38 | 33 | 33 | - | 86.8 | 67,483 | 37,284 | 38,032 | 2.0 | 56.4 | 2,158 | 2,202 | 2.0 | NRSP |
| 3 | Kotli (overlapping) | 38 | 36 | 36 | - | 94.7 | 67,483 | 13,807 | 13,807 | - | 20.5 | 566 | 566 | - | AJKRSP |
| 4 | Muzaffarabad | 32 | 18 | 18 | - | 56.3 | 60,712 | 21,451 | 21,451 | - | 35.3 | 992 | 992 | - | NRSP |
| 4 | Muzaffarabad (overlapping) | 32 | 26 | 26 | - | 81.3 | 60,712 | 45,689 | 45,689 | - | 75.3 | 2,192 | 2,192 | - | AJKRSP |
| 5 | Neelum | 9 | 9 | 9 | - | 100.0 | 15,649 | 7,213 | 7,213 | - | 46.1 | 331 | 331 | - | NRSP |
| 5 | Neelum (overlapping) | 9 | 9 | 9 | - | 100.0 | 15,649 | 6,722 | 6,722 | - | 43.0 | 267 | 267 | - | AJKRSP |
| 6 | Poonch (Rawalakot) | 25 | 25 | 25 | - | 100.0 | 47,319 | 37,859 | 38,589 | 1.9 | 81.6 | 1,944 | 1,990 | 2.4 | NRSP |
| 6 | Poonch (Rawalakot)(overlapping) | 25 | 12 | 12 | - | 48.0 | 47,319 | 4,523 | 4,523 | - | 9.6 | 260 | 260 | - | AJKRSP |
| 7 | Bhimber | 18 | 18 | 18 | - | 100.0 | 54,333 | 5,541 | 5,541 | - | 10.2 | 227 | 227 | - | AJKRSP |
| 8 | Sudhnoti | 12 | 13 | 13 | - | 108.3 | 26,849 | 11,295 | 13,171 | 16.6 | 49.1 | 656 | 702 | 7.0 | NRSP |
| 9 | Mirpur | 22 | 15 | 15 | - | 68.2 | 40,208 | 8,596 | 8,596 | - | 21.4 | 379 | 379 | - | AJKRSP |
| 10 | Forward Kahuta | 8 | 8 | 8 | - | 100.0 | 18,651 | 10,339 | 10,680 | 3.3 | 57.3 | 565 | 591 | 4.6 | NRSP |
| 10 | Sub Total | 196 | 179 | 179 | - | 91.3 | 398,970 | 261,858 | 267,031 | 2.0 | 66.9 | 13,120 | 13,356 | 1.8 | |
| GILGIT-BALTISTAN (GB) | | | | | | | | | | | | | | | |
| 1 | Astore | 8 | 8 | 8 | - | 100.0 | 11,000 | 6,444 | 6,444 | - | 58.6 | 304 | 304 | - | AKRSP |
| 2 | Diamir | 9 | - | - | - | - | - | - | - | - | - | - | - | - | - |
| 3 | Ghanche | 14 | 14 | 14 | - | 100.0 | 18,452 | 10,401 | 10,401 | - | 56.4 | 477 | 477 | - | AKRSP |
| 4 | Ghizer | 16 | 16 | 16 | - | 100.0 | 13,563 | 12,420 | 12,420 | - | 91.6 | 552 | 552 | - | AKRSP |
| 5 | Gilgit | 10 | 10 | 10 | - | 100.0 | 17,721 | 10,924 | 10,924 | - | 61.6 | 456 | 456 | - | AKRSP |
| 6 | Hunza-Nagar | 15 | 15 | 15 | - | 100.0 | 12,779 | 11,965 | 11,965 | - | 93.6 | 483 | 483 | - | AKRSP |
| 7 | Skardu | 31 | 31 | 31 | - | 100.0 | 35,134 | 23,627 | 23,627 | - | 67.2 | 1,010 | 1,010 | - | AKRSP |
| 6 | Sub Total | 103 | 94 | 94 | - | 91.3 | 108,650 | 75,781 | 75,781 | - | 69.7 | 3,282 | 3,282 | - | |
| FEDERALLY ADMINISTERED TRIBAL AREA (FATA)/Frontier Regions (FRs) | | | | | | | | | | | | | | | |
| 1 | Bajaur Agency | 37 | - | - | - | - | 65,410 | - | - | - | - | - | - | - | - |
| 2 | Khyber Agency | 28 | - | - | - | - | 55,225 | - | - | - | - | - | - | - | - |
| 3 | Kurram Agency | 23 | 3 | 3 | - | 13.0 | 42,293 | 4,668 | 4,668 | - | 11.0 | 143 | 143 | - | SRSP |
| 4 | Mohmand Agency | 21 | - | - | - | - | 37,161 | - | - | - | - | - | - | - | - |
| 5 | North Waziristan Agency | 22 | - | - | - | - | 39,697 | - | - | - | - | - | - | - | - |
| 6 | Orakzai Agency | 15 | - | - | - | - | 25,618 | - | - | - | - | - | - | - | - |
| 7 | South Waziristan Agency | 29 | - | - | - | - | 50,570 | - | - | - | - | - | - | - | - |
| 8 | T.A.Adj Lakki Marwat Distt | 1 | - | - | - | - | 932 | - | - | - | - | - | - | - | - |
| 9 | T.A.Adj Bannu Distt | 1 | - | - | - | - | 2,041 | - | - | - | - | - | - | - | - |
| 10 | T.A.Adj D.I.Khan Distt | 3 | - | - | - | - | 5,492 | - | - | - | - | - | - | - | - |
| 11 | T.A.Adj Kohat Distt | 5 | - | - | - | - | 9,511 | - | - | - | - | - | - | - | - |
| 12 | T.A.Adj Peshawar Distt | 3 | 3 | 3 | - | 100.0 | 6,118 | 1,738 | 1,738 | - | 28.4 | 116 | 116 | - | SRSP |
| 13 | T.A.Adj Tank Distt | 2 | - | - | - | - | 3,581 | - | - | - | - | - | - | - | - |
| 2 | Sub Total | 190 | 6 | 6 | - | 3.2 | 343,650 | 6,406 | 6,406 | - | 1.9 | 259 | 259 | - | |
| 113 | G. Total | 5,565 | 3,606 | 3,639 | 0.9 | 65.4 | 12,783,933 | 5,190,417 | 5,330,687 | 2.7 | 41.7 | 313,144 | 321,476 | 2.7 | |

White Paper issued by the Finance Department-Government of KP acknowledges ASP-RSPN's efforts.

Government of Khyber Pakhtunkhwa really appreciated the efforts under taken by US-Aid and the Assessment and Strengthening Program (ASP) that provides technical assistance to improve the effectiveness of its governance and, more importantly, stimulate economic growth in the province. The White Paper also praises the three year Strategic Plan developed by ASP for these departments as it not only identifies strategic issues confronting the department but also elaborates a results chain consisting of outcomes and outputs as well as identifying several new dimensions, which are imperative for successful achievement of the department's mission.

The white paper also advises that as the Planning and Development Department, is the approving authority of all the development budget of the line departments, it should therefore make the Strategic Plan a part of its annual M&E report published by DG M&E. Also that as the Strategic Plan covers a period of three years ASP should continue its hand holding and support to review, modify, and implement the Strategic and Annual Action Plan. The Strategic plan would also be made part of the M&E framework developed by UK Aid for the whole KP government

RSPN launches an innovative new project to tackle Mother-Child health issues

RSPN-GSM Provision of Reproductive Health Services through Social Marketing

The Rural Support Programmes Network (RSPN) is implementing a two year project titled, "Provision of Reproductive Health Services through Social Marketing" in 3 districts of Punjab. Initiated in April 2013 and funded by Greenstar Social Marketing, interventions are being implemented in Bahawalpur, Rahim Yar Khan and Jhang. The project aims to improve the quality of life of women and children in Pakistan by:

- Fostering an environment for women, girls and men which is conducive to making informed choices for their reproductive health
- Increasing the availability of quality reproductive health products/services with a focus on rural areas
- Strengthening accountability for results at all levels with increased transparency and innovative approaches for delivering reproductive health services

Using RSPN's proven model of social mobilization through Community Resource Persons, demand will be created for reproductive health products. Various behavior change communication techniques will be employed to create a demand for reproductive health services and to enable rural communities to advocate for better coordination and accountability for reproductive health issues. Through the Community Resource Persons, RSPN will reach 600,000 underserved people of district Jhang, Bahawalpur and Rahim Yar Khan; living in areas not served by the government's Lady Health Worker programme and will focus on married women of reproductive age and their spouses. Premarital counseling will also be provided to young girls and boys through expert mobilization teams. Involvement of local communities in accountability and sustainability of the project will be a value added mechanism which assures continuation of services beyond

the project's life. Collectively, these interventions will raise the contraceptive prevalence rate by 10% in the target areas, and will contribute directly to achieving the Millennium Development Goals 4 and 5, by decreasing the maternal mortality rate and infant mortality rate by the end of 2015.

Family Planning Camp in Khudabad, District Dadu

RSPN-RAF Research on Removing the Three Delays in Accessing Emergency Obstetric and Neonatal Care in Non-LHW Covered Areas of Pakistan

Two family planning camps were organized in the union council Khudabad of district Dadu by TRDP in collaboration with the Department of Population Welfare (DoPW). A lack of access to various contraceptive methods for women results in a large number of unwanted pregnancies in rural areas. Since the unmet need for contraceptives is high in areas such as Khudabad which are not covered by the government's Lady Health Worker programme, family planning camps address this unmet need and help reduce the burden of pregnancies, both on families and on the healthcare system.

Contraceptives and general medicine for the camp were supplied by the DoPW, who also assigned three female welfare workers to provide services at the camp. A woman of Abdullah Khushk volunteered her home for one of the camps, and 52 women from Abdullah Khushk and ten other nearby villages were provided contraceptives, folic acid and multivitamins. Additionally, 20 women also visited the OPD to receive treatment for other health issues. Interventions have been taking place in Dadu since January 2012 under RSPN's RAF funded research, which aims to develop a community based mechanism to remove the three delays women face in accessing emergency obstetric and neonatal care in non-LHW covered areas of Pakistan. So far 2406 women, along with their husbands and extended families have been counseled by trained Community Resource Persons on maternal, neonatal and reproductive health issues and 755 pregnant women have been referred to health facilities for antenatal or postnatal checkups and institutional deliveries.

Launch of the ALIF AILAN-RSPN project

Mobilizing Communities to Demand Education (Article 25-A) and Local Accountability

The project is being implemented in 56 Union Councils in 7 districts of Pakistan (4 Districts of Punjab and 3 Districts of KPK). The proposed project will be implemented by the Rural Support Programmes Network (RSPN) through its partner Rural Support Programmes (RSPs) by involving the Local Support Organizations (LSOs) fostered by the RSPs. The project aims at mobilizing the rural communities to demand from local politicians and influencers for implementation of the article 25 A and establish the community based mechanism for local accountability for improvement in school conditions and increase in enrolment. Through this project LSOs and their Community Resource Persons (CRPs) will be engaged to create awareness among the rural communities regarding article 25 A so that they can demand the implementation of this article from the politicians who will come to them to seek votes in the forthcoming general election. After the election the LSOs will also have follow up meeting with their local politicians and political workers regarding their pledges for improvement in schools and education system. LSOs will also have regular meeting with school



Mother and her child in Dadu

management committees and school teachers to have discussion with them about the proper utilization of the funds allocated for each school and to ensure the attendance of the teachers in schools. At district level, District Education Network (DEN) comprising of LSOs and local NGOs/CBOs working on education will be established. The DEN will be engaged in advocacy with the department of education and other stakeholders for allocation and proper utilization of the resources for improvement in school conditions. The LSOs, Village Organizations (VOs) and Community Organizations (COs), will meet on monthly basis and through these meeting parents and caretakers will be motivated to send their children to schools for increase in the enrolment.

Capacity Building of Village Disaster Management Committees

Tahafuz- Building Resilience through Community Based Disaster Risk Management in the Sindh Province of Pakistan

Since its inception in October 2012 the RSPN with the support of its implementing partners NRSP & TRDP under the Tahafuz project has organized 2,678 community members into 232 Village Disaster Management Committees (VDMCs) from the targeted areas. Gender composition in these committees was given special consideration and almost equal participation of men accumulating to 1,345 and women 1,333 was ensured in formation of VDMCs. The selected VDMCs members were trained on how to conduct vulnerability assessment, risk



Training of Union Council Disaster Management committees on Advocacy and Networking

analysis and its evaluation using tools such as Hazard Map, Resource Maps, Seasonal and Historical Calendars. To enable communities to deal with any abrupt emergency situation each of the 232 VDMCs developed unique disaster risk management plans.

With the intent to charge communities to play pro-active role in addressing and projecting their issues within the context of DRR the extended arm of VDMC named as Union Disaster Management Committee (UDMC) has been established. The RSPN currently have evolved 20 UDMCs in total; the members of which have been trained on organizational management and development as well as advocacy and networking. The RSPN recently organized the advocacy and networking workshops in all four target districts involving a wide range of stakeholders such as government officials, DDMA representatives, NGOs, Media and members of LSO, VDMCs and UDMCs. During the events guests and community members exchanged their views and experiences. Discussions were held among stakeholders to establish early warning systems in order to disseminate hazard related information down to communities in an efficient manner.

The project has now entered its final phase and is presently engaged in extensive construction of small scale infrastructures in all 232 VDMCs; to provide facilitation to communities during the emergency situation. The community have been empowered with the responsibility to lead all project activities on their own to help them learn project management skills. At present the physical work is in progress on 179 Community Critical Infrastructure (CCIs) out of which 58 have been completed. The VDMCs are being provided full support and assistance by the RSPs social mobilizers and CBDRM Engineers.

WHO WE ARE

The Rural Support Programmes Network (RSPN) is the largest development network of Pakistan, with an outreach to over 33 million rural Pakistanis. It consists of 12 member Rural Support Programmes (RSPs) that espouse a common approach to rural development: social mobilisation. Social mobilisation centres around the belief that poor people have an innate potential to help themselves, that they can better manage their limited resources if they organise and are provided technical and financial support. The RSPs provide social guidance, and technical and financial assistance to the rural poor. RSPN is the strategic platform for the RSPs: it provides capacity building support to them, and assists them in policy advocacy and donor linkages.

