



With nearly 4.2 million households now part of the outreach of its member RSPs, RSPN has seen critical support reach rural communities throughout Pakistan over the past three months. In the urgent area of

flood recovery, a profitable **sunflower**

harvest for Sindhi farmers, transitional shelters for displaced people across the country, micro-infrastructure construction in Swat, and

community and advocacy based healthcare actions in flood affected districts of Sindh. Healthcare efforts by RSPN and its RSPs went beyond flood recovery, with the

RSPs working with UNICEF to improve **polio**

vaccination in urban Karachi and with USAID to help promote reproductive health and family planning in marginalized rural communities across Pakistan. The charge of spreading Biogas in the country also met with significant progress, with RSPN's biogas initiative developing

Pakistan's first indigenous

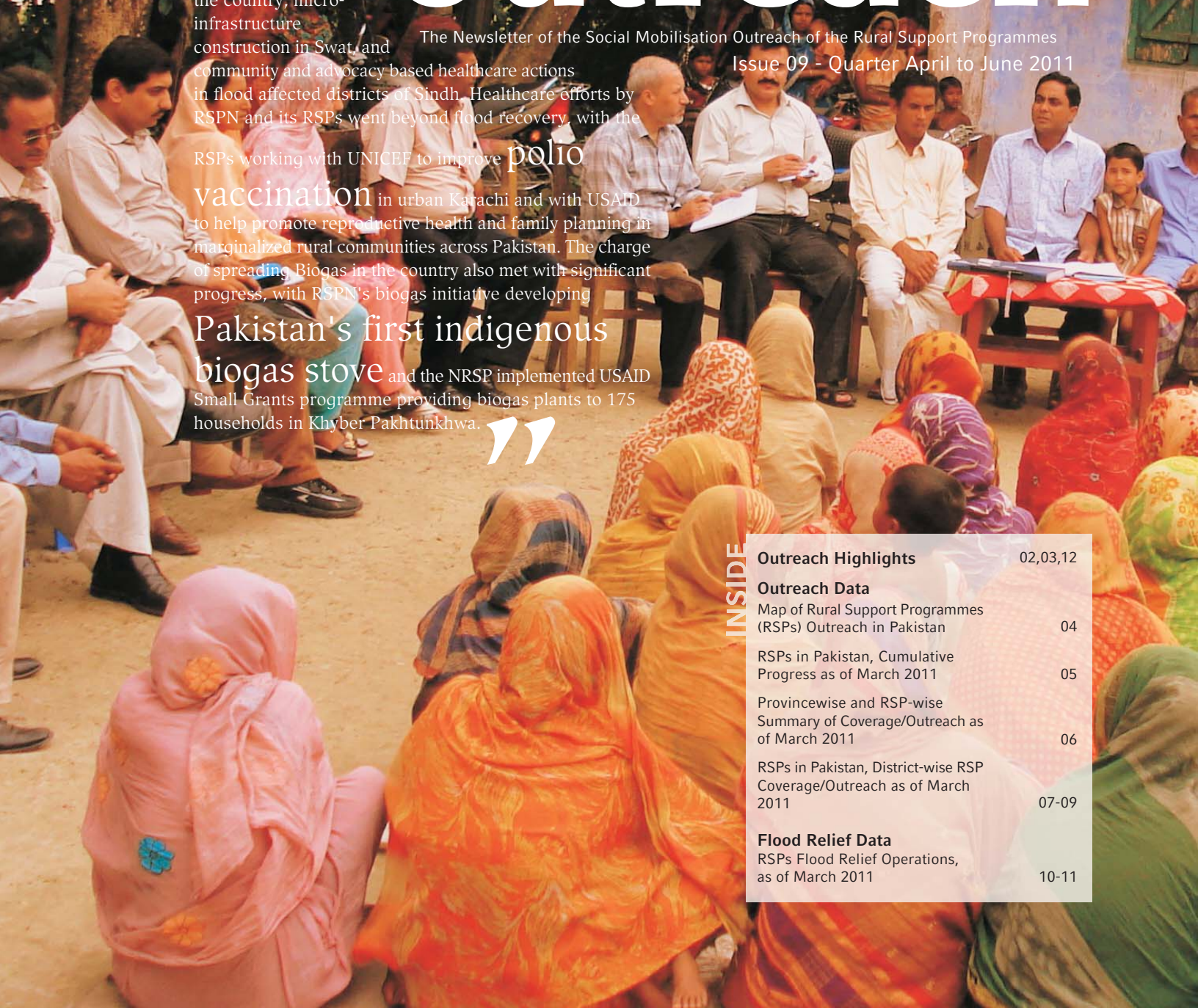
biogas stove and the NRSP implemented USAID Small Grants programme providing biogas plants to 175 households in Khyber Pakhtunkhwa.



outreach

The Newsletter of the Social Mobilisation Outreach of the Rural Support Programmes

Issue 09 - Quarter April to June 2011



INSIDE

Outreach Highlights	02,03,12
Outreach Data	
Map of Rural Support Programmes (RSPs) Outreach in Pakistan	04
RSPs in Pakistan, Cumulative Progress as of March 2011	05
Provincewise and RSP-wise Summary of Coverage/Outreach as of March 2011	06
RSPs in Pakistan, District-wise RSP Coverage/Outreach as of March 2011	07-09
Flood Relief Data	
RSPs Flood Relief Operations, as of March 2011	10-11

16 June 2011 Dadu, Sindh - A beneficiary family stands in front of its transitional shelter, recently completed under RSPN's USAID funded Bahaal project. Bahaal is providing flood affectees across Pakistan support to construct one-room transitional shelters, which will tide over the beneficiaries through the winter season to build their own permanent housing units. Preference is being given to poor families with children.

Outreach Highlights/ Outreach Data/ Flood Relief/ 2011



Successful Sunflower Harvest for Beneficiary Farmers of the Sindh Agricultural Recovery Project

May to June 2011 - RSPN's USAID funded Sindh Agricultural Recovery Project (SARP) has successfully generated a harvest of over 30,000 tons of sunflower, with a farm gate value in excess of Rs 1.7 billion for the farmers. Translating to about Rs 42,000 in revenue for each farmer, this amounts to a monthly income of Rs 10,000 over a period of 4 months. SARP was initiated in December 2010 to provide \$15 million in assistance to small farmers in Sindh for the recovery of their agricultural livelihoods. Overall targeting 50,575 small farmers, the project provided farmers with a full complement of inputs, including sunflower seeds and fertilizer, for cultivation over an area of 101,150 acres. The recovery of agricultural life in Sindh has been an urgent national concern since last year. Sindh was the worst affected province in the country during the 2010 floods: 7 million people were displaced in the province and 2.6 million acres of standing crop were destroyed.

RSPN Deploys UNICEF's Polio Awareness Campaign

June 2011- RSPN signed an agreement with UNICEF Sindh for the implementation of the project, "Awareness Raising Amongst Urban Communities of Karachi for Polio Vaccination

of Children". Training and deploying 395 women and men campaigners for promoting polio vaccinations, RSPN reached 96,615 households from seven high risks Union Councils (UCs) of Karachi over period of ten days. Beyond person-to-person contact, the campaign also disseminated its message through mega phone announcements, TV cable channels, and 429 local religious leaders. The awareness raising team also extended support to 'Health Teams' during the polio vaccination days (20-22 June 2011) by making announcements about their visits and helping them address any vaccination refusals.

Bahaal Builds Transitional Shelters for Recovery

June 2011 - In order to provide flood affected people across Pakistan with a more durable basis for recovery, RSPN's USAID funded project Bahaal has been providing them with transitional shelters. A transitional shelter is a 280 square feet ventilated, windowed room. As of 30 June 2011, 5,531 transitional shelters have been completed. Eventually, a total of 7,630 households are expected to benefit from transitional shelters, representing a beneficiary population of 50,205. Bahaal, a USAID funded project being implemented by RSPN, is an \$8.234 million emergency relief and early recovery assistance project active in 16 districts of the four provinces of Pakistan. Its assistance is supporting 74,055 households, totaling 487,282 beneficiaries.

RSPN's Biogas Initiative Breaks New Developmental Grounds

June 2011 - RSPN's SNV funded Pakistan Domestic Biogas Programme (PDBP) saw a number of new technologies under its right development come to fruition. PDBP has designed the first biogas stove in Pakistan by collaborating with the Christian Training and Testing Center in Gujranwala. Initial tests indicate that it is more efficient than all the biogas stoves produced in 13 SNV countries. Local appliance manufacturers in Faisalabad and Sargodha have been trained to make the stove and it is expected to be out in the market in the immediate future. Beyond technological development, the project also saw itself conduct technical assistance this quarter past with its 6th mason training in partnership with Government College of Technology (GCT), Faisalabad. This brings the total number of masons trained by PDBP in biogas technology to 174. PBBP has also been conducting supervisors training, with 13 supervisors of BCCs qualified by now to oversee the work of masons.

RSPN's USAID Funded Effort Helps Improve Reproductive Health and Family Planning

June 2011 - Under the USAID funded FALAH project, RSPN has by now trained 572 women and 564 men Community-based Volunteers (CBVs) to help promote reproductive health

and family planning in marginalized rural communities. To bridge the gap in service delivery, RSPN has supplemented its CBVs with 14 Lady Health Visitors (LHVs) as well, who are offering services in contraception and family planning. RSPN is implementing its community-based FALAH interventions in 53 UCs from 6 districts in partnership with five of its member RSPs i.e NRSP for districts Thatta and DG Khan, TRDP for district Dadu, SRSO for districts Sukkur, SGA for district Sanghar and SRSP for district Mansehra.

RSPN's Health Project Supports Flood Affected Rural Areas

June 2011 - RSPN's British Pakistan Foundation (BPF) funded Sehat project established 14 Union Council Health Networks (UCHNs) and 184 Village Health Committees (VHCs) to mobilize communities and government institutions for the delivery of health services in three flood affected districts of Sindh. RSPN locally implemented this effort in partnership with two RSPs, TRDP in district Dadu and SRSO in district Shahdadt and Shikarpur.

At the community level, the project trained 560 men and 560 women Community Resource Persons (CRPs) to rally community health actions. The CRPs conducted meetings with 38,517 women and 36,505 men and disseminated messages on the importance of hygiene, prevention from diarrhea, waterborne diseases, use of Oral Rehydration Salt (ORS),



17 May 2011 Shikarpur, Sindh - Female farmers gathering mature sunflower from their fields, which was grown under RSPN's USAID funded Sindh Agricultural Recovery Project (SARP). SARP placed particular emphasis on reaching widow or female headed households

Map of Rural Support Programmes (RSPs) Outreach in Pakistan

- SGA Sindh Graduates Association - 1972
- AKRSP Aga Khan Rural Support Programme - 1982
- SRSP Sarhad Rural Support Programme - 1989
- NRSP National Rural Support Programme - 1992
- GBTI Ghazi Barotha Taraqiati Idara - 1995
- TRDP Thardeep Rural Development Programme - 1997
- PRSP Punjab Rural Support Programme - 1998
- BRSP Balochistan Rural Support Programme - 2001
- SRSO Sindh Rural Support Organization - 2003
- AJKRSP Azad Jammu & Kashmir Rural Support Programme - 2007
- FIDA Foundation for Integrated Development Action



Outreach Highlights/ Outreach Data/ Flood Relief Data

Rural Support Programmes (RSPs) in Pakistan, Cumulative Progress as of March 2011

Indicators	AJKRSP	AKRSP	BRSP	GBTI	NRSP	PRSP	SGA	SRSO	SRSP	TRDP	All RSPs	
# of RSP Working Districts*	7	7	11	3	48	21	1	9	19	4	110*	
# of Rural Union Councils with RSP Presence*	115	118	170	20	1,806	787	11	312	424	112	3,526	
# of Organized Households*	75,758	108,969	153,800	30,406	1,832,496	790,556	9,837	409,843	511,409	251,343	4,167,155	
# of Local Support Organisations (LSOs)	32	44	12	2	362	3	-	-	32	15	520	
# of Community Organisations (COs) formed	Women COs	1,177	2,018	2,929	1,246	51,397	19,291	345	18,543	5,199	7,744	111,388
	Men COs	1,726	2,703	6,384	1,264	66,205	29,569	345	5,157	14,947	5,674	136,301
	Mix COs	814	-	-	-	6,803	1,121	-	34	-	1,951	10,714
	TOTAL	3,717	4,721	9,313	2,510	124,405	49,981	690	23,734	20,146	15,369	258,403
# of COs Members	Women COs	33,182	68,007	45,650	21,707	886,349	328,882	9,425	343,207	133,217	159,838	2,056,375
	Men COs	44,267	108,247	101,877	23,893	946,147	515,053	9,425	89,647	383,481	138,269	2,399,172
	TOTAL	77,449	176,254	147,527	45,600	1,832,496	843,935	18,850	432,854	516,698	298,107	4,455,547
Amount of Savings of COs (Rs. Million)	Women COs	13	129	4	3	186	44.10	-	32	34	73	518
	Men COs	18	371	7	4	1,064	69.62	-	19	82	114	1,738
	TOTAL	31	501	11	7	1,250	113.72	-	51	116	188	2,256
# of Community Members Trained	Women COs	7,554	58,754	2,900	9,415	790,338	125,787	4,737	173,340	48,243	58,416	1,288,029
	Men COs	3,662	27,804	7,040	3,371	856,248	281,241	4,737	7,811	58,225	75,101	1,297,572
	TOTAL	11,216	86,558	9,940	12,786	1,646,586	407,028	9,474	181,151	106,468	133,517	2,585,601
Amount of Micro-Credit Disbursement (Rs. Mil)	Women COs	31	195	9	182	16,768	2,545.54	-	659	281	1,195	22,039
	Men COs	58	833	16	66	36,275	4,150.70	-	455	322	1,718	43,905
	TOTAL	89	1,028	25	248	53,043	6,696.24	-	1,114	603	2,913	65,944
# of Loans	Women COs	1,530	74,813	1,156	12,484	1,281,810	203,970	-	51,800	27,554	102,254	1,771,605
	Men COs	2,832	546,311	1,600	4,923	2,228,035	322,848	-	35,417	30,653	104,756	3,277,408
	TOTAL	4,362	621,124	2,756	17,407	3,509,845	526,818	-	87,217	58,207	207,010	5,049,013
# of Health Micro Insurance Scheme Clients/ Members	Women COs	-	-	-	9,389	1,272,570	-	-	287,183	1,393	55,604	1,626,139
	Men COs	-	-	-	5,625	2,226,001	-	-	230,751	2,178	63,530	2,528,085
	TOTAL	-	-	-	15,014	3,498,571	-	-	517,934	3,571	119,134	4,154,224
# of PPI/CPI Schemes Initiated	861	3,576	945	455	23,143	6,300	-	6,104	6,095	49,486	96,933	
# of PPI/CPI Schemes Completed	750	3,576	743	450	21,533	5,812	-	6,010	5,769	48,427	93,420	
# of Beneficiary Households of Initiated CPIs	66,930	284,440	32,300	56,974	968,279	661,517	-	71,824	1,308,608	304,421	3,772,537	
Total Cost of Initiated CPIs (Rs. Million)	544	1,825	423	124	5,067	1,387.22	20	847	2,688	527	13,723	
# of Community Schools Established	-	867	50	12	504	263	17	14	73	110	1,904	
# of Students Enrolled	Girls	-	2,900	125	780	8,041	9,455	-	692	1,991	-	22,804
	Boys	-	7,375	16	608	8,853	8,827	-	1,285	2,470	-	28,587
	TOTAL	-	10,275	141	1,388	16,894	18,282	-	1,977	4,461	-	51,391
# of Adults Literated or Graduated	Girls	-	-	-	-	19,715	-	-	58	55	-	19,828
	Boys	-	-	-	-	2,038	-	-	-	38	-	2,076
	TOTAL	-	-	-	-	21,753	-	-	58	93	-	21,904
# of Traditional Birth Attendants/ Health Workers Trained**	Women COs	20	1,243	894	95	3,153	8,442	-	949	1,066	675	16,537
	Men COs	-	-	-	-	-	1,770	-	-	467	675	2,912
	TOTAL	20	1,243	894	95	3,153	10,012	-	949	1,533	1,350	19,449

*The 110 includes 108 districts and 2 FATA/FR

**Overlapping in 14 Districts, 86 Union Councils and 21,115 Households

Province-wise
Summary of RSPs
Outreach, as of
March 2011

Name of Province/ Area	Total Rural UCs in the District	UCs Having RSPs Presence		Total Rural HHs in the District (1998 Census)	HH Organised		Total Number of All COs Formed as of March, 2011
		# as of March, 2011	% cov as of March 2011		# as of March, 2011	% cov as of March 2011	
ICT	12	12	100.0	43,884	13,848	31.6	896
Balochistan	547	245	44.8	523,953	229,315	43.8	13,169
KPK	961	524	54.5	1,580,629	646,388	40.9	28,706
Sindh	921	639	69.4	2,816,903	861,673	30.6	51,823
Punjab	2,635	1,827	69.3	5,795,061	2,104,071	36.3	148,534
AJK	196	179	91.3	398,970	230,231	57.7	11,770
Gilgit-Baltistan	103	94	91.3	108,650	75,781	69.7	3,282
FATA/Frontier Regions	190	6	3.2	48,411	5,848	12.1	223
Total	5,565	3,526	63.4	11,316,461	4,167,155	36.8	258,403

RSP-wise Summary of
Coverage/Outreach as
of March 2011

Name of RSPs	Total Rural UCs in the District	UCs Having RSPs Presence		Total Rural HHs in the District (1998 Census)	HH Organised		Total Number of All COs Formed as of March, 2011
		# as of March, 2011	% cov as of March 2011		# as of March, 2011	% cov as of March 2011	
AJKRSP	151	115	76.2	306,150	75,758	24.7	3,717
AKRSP	118	118	100.0	145,529	108,969	74.9	4,721
BRSP	236	170	72.0	344,614	153,800	44.6	9,313
GBTI	165	20	12.1	371,315	30,406	8.2	2,510
NRSP	2,272	1,806	79.5	5,587,741	1,832,496	32.8	124,405
PRSP	1,688	823	48.8	3,855,550	783,294	20.3	53,798
SGA	55	11	20.0	209,191	9,837	4.7	690
SRSO	431	312	72.4	1,183,970	409,843	34.6	23,734
SRSP	722	424	58.7	1,471,226	511,409	34.8	20,146
TRDP	151	112	74.2	519,666	251,343	48.4	15,369
Total	5,565	3,526	63.4	11,316,461	4,167,155	36.8	258,403

Rural Support Programmes (RSPs) in Pakistan, District-wise RSP Coverage/Outreach as of March 2011

Name of District	Total rural and Peri-Urban UCs in the District	UCs Having RSPs Presence		Total Rural HHs in the District (1998 Census)	HH Organised		Total Number of All COs Formed as of March, 2011	RSP	
		# as of March, 2011	% cov as of March 2011		# as of March, 2011	% cov as of March 2011			
Islamabad									
1	ICT	12	12	100.0	43,884	13,848	31.6	896	NRSP
	Sub Total	12	12	100.0	43,884	13,848	31.6	896	NRSP
Balochistan									
1	Awaran	8	8	100.0	22,144	9,345	42.2	565	NRSP
2	Barkhan	8	-	-	-	-	-	-	-
3	Bolan	27	1	3.7	35,003	2,434	7.0	109	BRSP
4	Chaqhi	10	-	-	-	-	-	-	-
5	Dera Bugti	12	-	-	-	-	-	-	-
6	Gawadar	13	13	100.0	16,691	13,053	78.2	633	NRSP
7	Harnai	10	-	-	-	-	-	-	-
8	Jhal Magsi	9	9	100.0	16,184	8,531	52.7	406	BRSP
9	Jaffarabad	46	22	47.8	52,664	5,659	10.7	324	BRSP
10	Kallat	18	15	83.3	31,396	28,829	91.8	1,869	BRSP
11	Kech / Turbat	38	38	100.0	70,164	38,239	54.5	1,751	NRSP
12	Kharan	7	7	100.0	14,328	11,349	79.2	636	BRSP
13	Khuzdar	35	27	77.1	60,032	23,871	39.8	1,362	BRSP
14	Killa Abdullah	25	-	-	-	-	-	-	-
15	Killa Saifullah	15	13	86.7	28,796	18,542	64.4	1,183	BRSP
16	Kohlu	8	-	-	-	-	-	-	-
17	Lasbella	22	-	-	34,637	-	-	-	NRSP
18	Loralai	20	-	-	-	-	-	-	-
19	Mastung	13	13	100.0	18,831	18,831	100.0	1,202	BRSP
20	Musa Khel	10	-	-	-	-	-	-	-
21	Naseerabad	24	-	-	-	-	-	-	-
22	Noshki	10	-	-	-	-	-	-	-
23	Panjgoor	16	16	100.0	35,703	14,878	41.7	907	NRSP
24	Pishin	38	35	92.1	55,654	17,828	32.0	1,136	BRSP
25	Quetta	47	-	-	-	-	-	-	-
26	Sherani	7	7	100.0	10,608	2,520	23.8	113	BRSP
27	Sibi	11	-	-	-	-	-	-	-
28	Washuk	9	-	-	-	-	-	-	-
29	Zhob	21	21	100.0	21,118	15,406	73.0	973	BRSP
30	Ziarat	10	-	-	-	-	-	-	-
	Sub Total	547	245	44.8	523,953	229,315	43.8	13,169	
Khyber Pakhtunkhwa									
1	Abbotabad	51	43	84.3	115,585	46,600	40.3	1,526	SRSP
2	Banu	49	-	-	-	-	-	-	-
3	Battagram	20	20	100.0	46,053	33,042	71.7	1,224	SRSP
4	Buner	27	5	18.5	56,591	269	0.5	19	NRSP
4	Buner (overlapping)	27	10	37.0	56,591	975	1.7	50	SRSP
5	Charsadda	49	28	57.1	102,361	12,926	12.6	736	NRSP
5	Charsadda (overlapping)	49	37	75.5	102,361	20,550	20.1	779	SRSP
6	Chitral	24	24	100.0	36,879	33,188	90.0	1,439	AKRSP
6	Chitral (overlapping)	24	24	100.0	36,879	22,572	61.2	687	SRSP
7	Dir Upper	28	19	67.9	70,230	26,244	37.4	1,322	SRSP
8	Dir Lower	37	-	-	-	-	-	-	-
9	D.I.Khan	47	-	-	-	-	-	-	-
10	Hangu	19	17	89.5	24,536	14,204	57.9	493	SRSP
11	Haripur	45	4	8.9	94,383	6,306	6.7	611	GBTI
11	Haripur (overlapping)	45	37	82.2	94,383	39,747	42.1	1,208	SRSP
12	Karak	21	21	100.0	40,734	44,954	110.4	1,770	SRSP
13	Kohat	32	29	90.6	55,911	56,592	101.2	2,191	SRSP
14	Kohistan	38	35	92.1	74,041	28,488	38.5	1,719	SRSP
15	Lakki Marwat	33	-	-	-	-	-	-	-
16	Malakand P.A	28	25	89.3	45,731	20,272	44.3	1,456	NRSP
17	Mansehra	59	54	91.5	167,833	98,993	59.0	3,393	SRSP
18	Mardan	75	63	84.0	141,386	30,781	21.8	2,181	NRSP
18	Mardan(overlapping)	75	20	26.7	141,386	30,114	21.3	1,425	SRSP
19	Nowshera	48	10	20.8	84,851	10,872	12.8	456	SRSP
20	Peshawar	67	10	14.9	132,070	6,927	5.2	325	SRSP
21	Shangla	28	18	64.3	53,994	20,982	38.9	1,213	SRSP
22	Swabi	55	4	7.3	112,083	7,104	6.3	540	GBTI
22	Swabi (overlapping)	55	38	69.1	112,083	23,493	21.0	1,503	NRSP
23	Swat	65	19	29.2	125,377	6,488	5.2	298	NRSP
23	Swat (overlapping)	65	14	21.5	125,377	3,705	3.0	142	SRSP
24	Tank	16	-	-	-	-	-	-	-
	Sub Total	961	524	54.5	1,580,629	646,388	40.9	28,706	

Rural Support Programmes (RSPs) in Pakistan, District-wise RSP Coverage/Outreach as of March 2011

Name of District	Total rural and Peri-Urban UCs in the District	UCs Having RSPs Presence		Total Rural HHs in the District (1998 Census)	HH Organised		Total Number of All COs Formed as of March, 2011	RSP	
		# as of March, 2011	% cov as of March 2011		# as of March, 2011	% cov as of March 2011			
Sindh									
1	Badin	46	46	100.0	185,266	71,070	38.4	3,589	NRSP
2	Dadu	52	30	57.7	164,849	32,363	19.6	1,207	TRDP
3	Ghotki	46	35	76.1	158,489	74,930	47.3	3,757	SRSO
4	Hyderabad	37	10	27.0	128,856	6,412	5.0	444	NRSP
5	Jacobabad	40	18	45.0	90,682	39,787	43.9	2,977	SRSO
6	Jamshoro	28	11	39.3	88,816	20,148	22.7	227	TRDP
7	Karachi	-	-	-	-	-	-	-	-
8	Kashmore	37	37	100.0	110,969	78,650	70.9	4,787	SRSO
9	Khairpur	76	64	84.2	208,270	53,049	25.5	2,370	SRSO
10	Larkana	44	31	70.5	121,639	17,018	14.0	1,052	SRSO
11	Matiari	19	15	78.9	47,026	23,129	49.2	1,770	NRSP
12	Mirpur Khas	41	41	100.0	111,973	40,850	36.5	2,529	NRSP
13	Nausharo Feroz	51	21	41.2	164,715	11,854	7.2	645	SRSO
14	Nawabshah	51	27	52.9	141,671	3,092	2.2	564	NRSP
15	Shahdad Kot	40	32	80.0	128,408	16,181	12.6	1,081	SRSO
16	Sanghar	55	11	20.0	209,191	9,837	4.7	690	SGA
17	Shikarpur	51	50	98.0	122,340	98,737	80.7	5,893	SRSO
18	Sukkur	46	24	52.2	78,458	19,637	25.0	1,172	SRSO
19	Tando Allahyar	19	12	63.2	47,082	12,702	27.0	1,025	NRSP
20	Tando Muhammad Khan	16	11	68.8	39,648	7,151	18.0	520	NRSP
21	Tharparkar	44	44	100.0	159,486	158,881	99.6	11,424	TRDP
22	Thatta	55	42	76.4	202,554	26,244	13.0	1,589	NRSP
23	Umer Kot	27	27	100.0	106,515	39,951	37.5	2,511	TRDP
	Sub Total	921	639	69.4	2,816,903	861,673	30.6	51,823	
Punjab									
1	Attock	65	12	18.5	164,849	16,996	10.3	1,359	GBTI
1	Attock (overlapping)	65	64	98.5	164,849	52,538	31.9	3,107	NRSP
2	Bahawalnagar	101	101	100.0	158,489	192,909	121.7	14,281	NRSP
3	Bahawalpur	97	97	100.0	128,856	226,415	175.7	15,755	NRSP
4	Bhakkar	42	40	95.2	90,682	117,493	129.6	7,737	NRSP
5	Chakwal	65	60	92.3	88,816	47,770	53.8	2,658	NRSP
6	Chiniot	42	-	-	-	-	-	-	-
7	D G Khan	55	50	90.9	208,270	114,483	55.0	8,503	NRSP
7	D G Khan (overlapping)	55	35	63.6	208,270	19,909	9.6	1,266	PRSP
8	Faisalabad	71	71	100.0	121,639	46,013	37.8	3,057	PRSP
9	Gujranwala	97	68	70.1	47,026	39,007	82.9	2,356	PRSP
10	Gujrat	87	37	42.5	111,973	21,609	19.3	1,552	PRSP
11	Hafiz Abad	40	15	37.5	164,715	16,077	9.8	1,111	PRSP
12	Jhang	79	21	26.6	141,671	21,292	15.0	1,491	PRSP
13	Jhelum	50	35	70.0	128,408	21,894	17.1	1,235	NRSP
14	Kasur	89	7	7.9	122,340	8,768	7.2	691	PRSP
15	Khanewal	98	11	11.2	122,340	20,487	16.7	1,240	PRSP
15	Khanewal (overlapping)	98	70	71.4	78,458	17,775	22.7	1,662	NRSP
16	Khushab	49	45	91.8	47,082	106,791	226.8	6,262	NRSP
17	Lahore	30	27	90.0	39,648	33,814	85.3	2,130	PRSP
18	Layyah	44	31	70.5	159,486	71,050	44.5	4,893	PRSP
19	Lodhran	70	70	100.0	202,554	46,705	23.1	3,886	NRSP
20	Mandi Bahauddin	65	46	70.8	106,515	23,466	22.0	1,656	PRSP
21	Mianwali	53	42	79.2	120,486	52,665	43.7	3,019	NRSP
22	Multan	69	22	31.9	261,678	35,212	13.5	2,388	PRSP
22	Multan (overlapping)	69	58	84.1	261,678	17,654	6.7	1,958	NRSP
23	Muzaffargarh	93	80	86.0	317,647	85,324	26.9	5,512	PRSP
23	Muzaffargarh (overlapping)	93	24	25.8	317,647	-	-	-	NRSP
24	Nanakana Sahib	65	-	-	-	-	-	-	-
25	Narowal	74	61	82.4	150,406	65,402	43.5	3,216	PRSP
26	Okara	111	25	22.5	270,191	24,660	9.1	1,578	PRSP
27	Pakpattan	63	17	27.0	174,888	17,233	9.9	6,374	PRSP
27	Pakpattan (overlapping)	63	54	85.7	174,888	12,295	7.0	1,486	NRSP
28	Rahim Yar Khan	103	103	100.0	338,677	62,559	18.5	5,948	NRSP
29	Rajanpur	44	43	97.7	133,182	83,680	62.8	5,832	NRSP
29	Rajanpur (overlapping)	44	33	75.0	133,182	18,330	13.8	1,197	PRSP
30	Rawalpindi	58	58	100.0	256,911	65,058	25.3	4,153	NRSP
31	Sahiwal	83	39	47.0	227,413	33,383	14.7	2,065	PRSP
31	Sahiwal (overlapping)	83	52	62.7	227,413	12,414	5.5	1,201	NRSP
32	Sargodha	132	57	43.2	303,958	37,000	12.2	2,349	PRSP
33	Sheikhupura	91	9	9.9	207,805	16,474	7.9	1,107	PRSP

Rural Support Programmes (RSPs) in Pakistan, District-wise RSP Coverage/Outreach as of March 2011

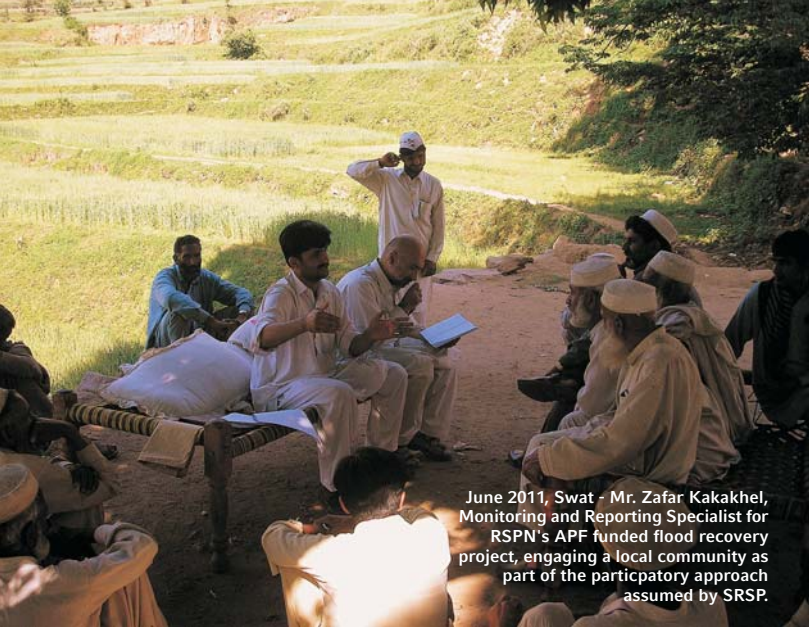
	Name of District	Total rural and Peri-Urban UCs in the District	UCs Having RSPs Presence		Total Rural HHs in the District (1998 Census)	HH Organised		Total Number of All COs Formed as of March, 2011	RSP
			# as of March, 2011	% cov as of March 2011		# as of March, 2011	% cov as of March 2011		
34	Sialkot	94	89	94.7	275,204	101,071	36.7	4,695	PRSP
35	Toba Tek Singh	79	22	27.8	187,555	27,713	14.8	1,874	PRSP
35	Toba Tek Singh (overlapping)	79	61	77.2	187,555	13,594	7.2	1,545	NRSP
36	Vehari	87	80	92.0	257,583	39,089	15.2	3,149	NRSP
	Sub Total	2,635	1,827	69.3	5,795,061	2,104,071	36.3	148,534	
Azad Jammu and Kashmir (AJK)									
1	Bagh	19	19	100.0	46,470	20,282	43.6	1,048	NRSP
1	Bagh (overlapping)	19	1	5.3	46,470	672	1.4	32	AJKRSP
2	Hattian	13	5	38.5	21,296	12,824	60.2	586	NRSP
2	Hattian (overlapping)	13	10	76.9	21,296	15,897	74.6	757	AJKRSP
3	Kotli	38	33	86.8	67,483	36,443	54.0	2,097	NRSP
3	Kotli (overlapping)	38	36	94.7	67,483	4,554	6.7	207	AJKRSP
4	Muzaffarabad	32	18	56.3	60,712	21,319	35.1	987	NRSP
4	Muzaffarabad (overlapping)	32	26	81.3	60,712	39,640	65.3	1,982	AJKRSP
5	Neelum	9	9	100.0	15,649	7,213	46.1	331	NRSP
5	Neelum (overlapping)	9	9	100.0	15,649	4,260	27.2	213	AJKRSP
6	Poonch (Rawalakot)	25	25	100.0	47,319	35,659	75.4	1,857	NRSP
7	Bhimber	18	18	100.0	54,333	4,515	8.3	215	AJKRSP
8	Sudhnoti	12	13	108.3	26,849	10,603	39.5	609	NRSP
9	Mirpur	22	15	68.2	40,208	6,220	15.5	311	AJKRSP
10	Forward Kahuta	8	8	100.0	18,651	10,130	54.3	538	NRSP
	Sub Total	196	179	91.3	398,970	230,231	57.7	11,770	
Gilgit-Baltistan (GB)									
1	Astore	8	8	100.0	11,000	6,444	58.6	304	AKRSP
2	Diamir	9	-	-	-	-	-	-	-
3	Ghanche	14	14	100.0	18,452	10,401	56.4	477	AKRSP
4	Ghizer	16	16	100.0	13,563	12,420	91.6	552	AKRSP
5	Gilgit	10	10	100.0	17,721	10,924	61.6	456	AKRSP
6	Hunza-Nagar	15	15	100.0	12,779	11,965	93.6	483	AKRSP
7	Skardu	31	31	100.0	35,134	23,627	67.2	1,010	AKRSP
	Sub Total	103	94	91.3	108,650	75,781	69.7	3,282	
Federally Administered Tribal Area (FATA)									
1	Bajaur Agency	37	-	-	-	-	-	-	-
2	Khyber Agency	28	-	-	-	-	-	-	-
3	Kurram Agency	23	3	13.0	42,293	4,110	9.7	117	SRSP
4	Mohmand Agency	21	-	-	-	-	-	-	-
5	North Waziristan Agency	22	-	-	-	-	-	-	-
6	Orakzai Agency	15	-	-	-	-	-	-	-
7	South Waziristan Agency	29	-	-	-	-	-	-	-
8	T.A.Adj Lakki Marwat Distt	1	-	-	-	-	-	-	-
9	T.A.Adj Bannu Distt	1	-	-	-	-	-	-	-
10	T.A..Adj D.I.Khan Distt	3	-	-	-	-	-	-	-
11	T.A.Adj Kohat Distt	5	-	-	-	-	-	-	-
12	T.A.Adj Peshawar Distt	3	3	100.0	6,118	1,738	28.4	106	SRSP
13	T.A.Adj Tank Distt	2	-	-	-	-	-	-	-
	Sub Total	190	6	3.2	48,411	5,848	12.1	223	
	GRAND TOTAL	5,565	3,526	63.4	11,316,461	4,167,155	36.8	258,403	

Rural Support Programmes (RSPs) Flood Relief Operations, as of March 2011

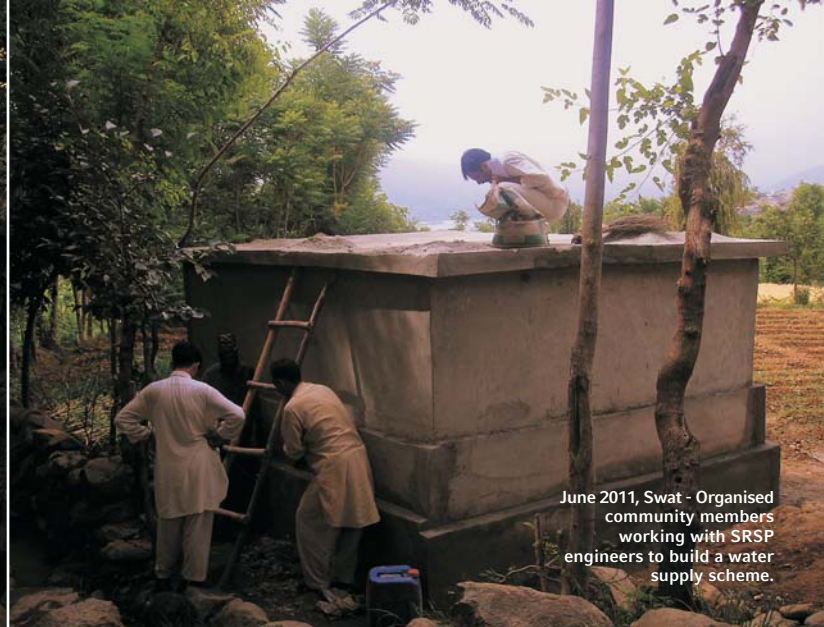
Districts	Food	NFI	Shelter	WASH	Agriculture Support (Seeds+DAP +Fertilizer etc.)	Other (Clothes on Eid, Food Supply: Milk & FI & NFIs)	Cooked Food	Medical Treatment	Livestock Care
	Households				Individual				
A. Sindh Rural Support Organisation (SRSO)									
Kashmore	174,102	6,000	3,000	46,453	12,810	7,444	150,524	62,641	18,660
Shikarpur	51,373	4,000	320	9,157	13,289	7,768	236,280	25,973	42,177
Sukkur	13,220	3,000	-	21,329	6,000	7,400	606,335	56,858	40,484
Khairpur	18,872	2,007	-	26,125	2,000	3,611	265,602	112,264	18,035
Ghotki	22,434	-	1,442	4,557	-	500	22,178	33,484	30,095
Larkana	56,093	1,000	700	3,262	5,795	309	-	30,762	5,764
Naushero Feroze	-	-	-	-	-	-	8,614	-	19,809
Qambar Shahdadkot	116,041	3,800	2,020	52,958	22,614	-	-	47,447	8,524
Jacobabad	126,301	-	3,900	29,362	20,648	896	162,225	88,825	9,248
Sub Total	578,436	19,807	11,382	193,203	83,156	27,928	1,451,758	458,254	192,796
B. Sindh Graduate Association (SGA)									
Karachi	148,894	722	-	450	-	3,561	-	9,122	-
Khairpur	585	-	-	-	-	-	585	500	-
Jamshoro	-	-	-	-	-	-	-	1,462	-
Hyderabad	4,950	-	-	-	-	100,800	4,590	98,600	-
Kashmore	15,171	-	-	-	-	-	15,171	3,843	-
Ghotki	2,686	-	-	-	-	-	2,686	-	-
Qambar-Shahdadkot	2,955	-	-	-	-	40	-	430	-
Others (Sukkur, Matiari, Sanghar, Dadu, Nausheroferoze)	61,708	105	3,625	5,473	4,644	-	61,708	23,906	2,322
Sub Total	236,949	827	3,625	5,923	4,644	104,401	84,740	137,863	2,322
C. Thardeep Rural Development Programme (TRDP)									
Dadu	98,199	23,497	4,800	30,672	43,145	20,760	1,750	10,411	39,020
Jamshoro	69,934	23,665	7,055	18,984	1,161	26,076	4,000	18,833	33,317
Sub Total	168,133	47,162	11,855	49,656	44,306	46,836	5,750	29,244	72,337
D. Sarhad Rural Support Programme (SRSP)									
Nowshera	6,229	27907	14856	62,778	-	11,331	100	-	-
Charsada	7,310	28644	11811	5,357	-	7,205	2,690	4,171	200
Peshawar	1,070	14360	10670	-	-	4,214	-	235	-
Swat	5,730	11887	1859	3,360	-	7,054	-	4,325	9,618
Haripur	-	2886	1037	-	-	-	-	-	-
Shangla	925	4825	1467	-	-	4,200	-	-	-
Kohistan	3865	6807	1249	-	-	6,635	-	14,568	-
Dir Upper	1555	1350	500	-	-	-	-	-	-
Chitral	600	1500	400	388	-	900	-	-	-
Dir Lower	300	300	0	-	-	-	-	-	-
Kohat	-	4181	810	-	-	7,053	-	-	-
Mansehra	-	361	324	-	-	78	-	-	-
Hangu	-	322	21	-	-	602	-	-	-
Swabi	-	1063	327	-	-	-	-	-	-
Mohmand Agency	-	1447	281	-	-	2,500	-	-	-
Sub Total	27,584	107,840	45,612	71,883	-	51,772	2,790	23,299	9,818
E. Balochistan Rural Support Programme (BRSP)									
Quetta	3,000	-	-	3,317	-	160	101	160	-
Barkhan	2,486	-	-	-	-	-	-	-	16,130
Jhalmagsi	4,544	2,414	-	5,921	-	877	-	14,003	-
Kalat	700	-	-	-	-	-	-	-	-
Khuzdar	500	-	-	-	-	-	-	-	-
Kohlu	2,454	-	-	-	-	48	-	48	24,555
Mastung	910	-	-	-	-	-	-	-	-
Sibi	6,000	-	-	105	500	21	-	21	-
Naseerabad	10,000	-	-	22,270	-	532	-	532	1,720
Jafferabad	14,000	40,704	9,775	10,118	22,018	180	-	-	45,091
Sub Total	44,594	43,118	9,775	41,731	22,518	1,818	101	14,7647	87,496

Rural Support Programmes (RSPs) Flood Relief Operations, as of March 2011

Districts	Food	NFI	Shelter	WASH	Agriculture Support (Seeds+DAP+ Fertilizer etc.)	Other (Clothes on Eid, Food Supply: Milk & FI & NFIs)	Cooked Food	Medical Treatment	Livestock Care	Households	
										Individual	
F. Azad Jammu and Kashmir Rural Support Programme (AJKRSP)											
Muzaffarabad	250	-	-	-	2,567	6,907	-	-	-	-	-
Neelum	7,915	200	235	2,250	1,782	3,054	-	-	-	-	
Hattian	-	-	-	-	9,523	1,650	-	-	-	-	
Bagh	-	-	-	-	-	1,016	-	-	-	-	
Haveli	-	-	-	-	-	538	-	-	-	-	
Rawalakot	-	-	-	1,566	-	610	-	-	-	-	
Sadhnuti	-	-	-	849	-	1,711	-	-	-	-	
Kotli	-	-	-	-	-	1,135	-	-	-	-	
Bhimber	-	-	-	805	-	402	-	-	-	-	
Mirpur	-	-	-	-	-	186	-	-	-	-	
Sub Total	8,165	200	235	5,470	13,872	17,209	-	-	-	-	
G. Punjab Rural Support Programme (PRSP)											
Muzaffargarh	1,120	4,785	3,324	5,134	54,009	10,721	3,598	180,562	124,166		
Layyah	4,126	2,466	1,200	1,148	1,600	300	9,264	67,000	70,320		
Multan	-	-	-	-	7,500	-	-	-	-		
Rahim Yar Khan	-	-	-	-	-	-	-	35,483	-		
Mianwali	-	-	-	-	-	-	-	1,433	-		
Rajanpur	31,532	-	-	-	-	-	3,000	89,012	73,743		
DG Khan	90	422	-	-	-	561	3,300	63,831	72,791		
Jhang	15,127	-	-	-	-	-	-	-	-		
Sub Total	51,995	7,673	4,524	6,282	63,109	11,582	19,162	437,321	341,020		
H. National Rural Support Programme (NRSP)											
Khushab	23,647	125	1,254	-	2,660	4	1,626	4,818	3,591		
Bhakkar	48,354	241	7,928	720	2,720	51	2,557	20,896	3,853		
Mianwali	62,136	2,658	13,104	878	815	197	1,661	26,486	5,713		
DG Khan	71,290	12,118	13,498	17,771	1,397	50,160	12,586	56,184	3,645		
Rajanpur	57,037	10,746	6,999	5,990	1,714	192	9,225	18,978	2,535		
Charsadda	18,260	11,732	1,839	1,481	1,447	588	8,804	7,839	4,575		
Nowshera	25,734	23,181	2,112	1,134	753	765	6,601	3,771	4,340		
Mardan	18,948	-	-	-	-	-	-	-	-		
Swat	17,630	2,741	490	500	980	90	-	-	-		
Malakand	-	-	50	-	-	-	-	-	-		
Muzaffarabad	500	-	40	-	-	250	-	-	-		
Neelum	4,688	-	42	-	-	-	-	-	-		
R.Yar Khan	106,506	645	12,900	23,499	-	14,090	-	2,798	2,637		
Thatta	63,243	14,470	14,288	45,834	-	-	300	38,929	9,887		
Benazirabad (Nawabshah)	-	1,900	3,143	2,224	-	-	4,025	4,687	3,788		
Matiari	-	-	173	488	-	-	697	-	958		
Sub Total	517,973	80,557	77,860	100,519	12,486	66,387	48,082	185,386	45,522		
OVERALL SUMMARY	1,633,829	307,184	164,868	474,667	244,091	327,933	1,612,383	1,286,131	751,311		



June 2011, Swat - Mr. Zafar Kakakhel, Monitoring and Reporting Specialist for RSPN's APF funded flood recovery project, engaging a local community as part of the participatory approach assumed by SRSP.



June 2011, Swat - Organised community members working with SRSP engineers to build a water supply scheme.

maternal and child health, birth spacing and immunization. At the government level, Sehat's UCHNs advocated health departments to deliver vaccination in under served areas, and successfully organized government vaccination outreach to 7,972 pregnant women and 31,591 children (of up to 2 years). Both VHCs and UCHNs, with support from health departments, People's Primary Health Care Initiatives (PPHI) and local NGOs, also organized 60 medicals camps, which provided antenatal care services and treatment of minor ailments to 5,125 women, birth spacing services to 1,190 women, treatment of diarrheal cases to 2,153 children and neonatal services to 1,755 neonates.

USAID's Small Grants and Ambassadors Fund Program Exceeds \$2 Million in Assistance

June 2011 - RSPN's USAID funded Small Grants and Ambassadors Fund Program has now successfully provided assistance of over \$2 million to 27 community driven organizations across Pakistan. Out of these 27 community driven organizations, grants for 26 organizations have been approved under the Ambassador's Fund Program, whereas the program's first Small Grants project has recently received its approval from USAID. The first project under the Small Grant's Program includes the provision of biogas plants to 175 households of 9 UCs of District Dera Ismail Khan, Khyber Pakhtunkhwa.

RSPN's APF Funded Effort Rebuilds and Rehabilitates Micro-Infrastructure in Flood Affected Swat

June 2011 - RSPN's American Pakistan Foundation (APF)

funded \$200,000 early recovery effort in the flood affected district of Swat has already completed 5 of its 33 micro-infrastructure projects underway in the area. The full range of possible micro-infrastructures are being covered under the project, including drinking water systems and sanitation, handpumps, link roads, irrigation channels, and street pavements. RSPN's member organization in Khyber Pakhtunkhwa, the Sarhad Rural Support Programme (SRSP), has been locally implementing work on these micro-infrastructures. SRSP has assumed a participatory approach, mobilizing 33 male and female Community Organizations (COs) into formation: these COs in turn are now working with SRSP field engineers to help build or rehabilitate micro-infrastructure in the respective communities.

"Previously our approach towards our recent difficulties was highly individualistic, but SRSP turned us towards an organised, communal approach for our own recovery."

Sabir of flood affected Swat proudly observes, whose village formed its own community organisation by the name of Jirga Behbood ("Welfare Council"). With funds provided by APF and under the technical assistance from SRSP engineers, this community organisation committed itself to the construction of a new drinking water supply system.

RURAL SUPPORT PROGRAMMES NETWORK (RSPN)

Address: House No. 7, Street 49, F-6/4, Islamabad, Pakistan

Tel: +92-51-2822476, 2821736, Fax: +92-51-2829115

Web: www.rspn.org



Coordinator: Mohammad Faisal Khalil (RSPN Communications)
Designer: Bilal Safdar (DOT advertising)